

What's new in 2006½

Viking Compact Entry Phones Now With Built in Color Video Camera

Residential or commercial door/gate handsfree communication

The **E-50** Series entry phones are compact, weather resistant, speaker phones designed to provide two way handsfree audio communication and color composite video of who is at your door or gate. The **E-50** can be mounted in a standard single gang box. Shown in stainless steel. Also available in polished brass (PB), oil rubbed bronze (BN), off white (WH), and black (BK)

- Built in color CMOS camera with 480 lines of resolution, wide viewing angle and tilt/swivel adjustments
- Wide temperature range (-30° to + 150° F)
- Phone line or **PABX/KSU** station powered speaker phone and 5-9 VDC powered camera (power adapter included) For 6-7 wire installation (1 CAT 5)
- Compact size for flush mount in Viking Model **VE-3x5**
- Weather and vandal resistant for outdoor locations
- Auto answer feature (monitoring)
- Operation similar to **E-10A** with intelligent auto disconnect on CPC, busy, dial tone, silence **OR...**
- Press the call button again to disconnect

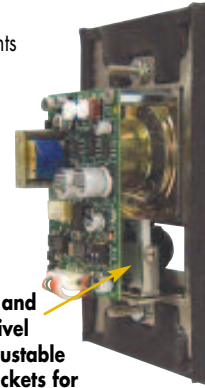
Beta units available soon

Model **E-50-SS** ?\$

Model **E-50-PB, E-50-BN, E-50-WH, E-50-BK** ?\$
Prices to be announced



Fax back No. 191



Tilt and Swivel Adjustable Brackets for Camera



E-50-SS

Brushed stainless steel. Shown in optional **VE-3x5** weather resistant surface mount box.

Add a Viking Entry Phone to an Existing Phone Line

Compatible with these Viking Entry phones:

- **E-10A, E-20B, E-30, E-40, E-50** Handsfree phones
- **K-1500-7** Stainless Steel Panel Phone
- Or use with any analog phone

The **Model C-200** allows a single line telephone or a telephone system to share a phone line with a single **Viking** Entry phone. Tenants may answer an entry call and converse with the visitor.

The **C-200** provides a "Call Waiting" tone if the phone line is in use.

Tenants may call out to the entry phone for monitoring purposes. Auxiliary contacts are provided to operate a doorbell, or activate a camera, lights, etc.

If additional features (such as door strike, multiple entry phones with caller ID, and key-less entry) are needed, use the **Viking C-2000A**.

Model **C-200**.....\$149.00



Fax back No. 169



Eliminate the Expense of Dedicated Phone Lines

The **FAXJ-1000** allows any business, large or small, to enjoy the convenience of automated data transmission without the perpetual monthly expense of a dedicated phone line.

The **FAXJ-1000** is a versatile phone/data/fax switch with the ability to automatically route calls via CNG tone, central office distinctive ring, or touch tones included in the dial string by the calling party. In addition, the **FAXJ-1000** offers full manual transfer capabilities.

The **FAXJ-1000** stores and retransmits caller ID information so that it is truly caller ID compatible.

Beta units available.

Model **FAXJ-1000**.....\$139.00



Fax back No. 261

Two-Input Voice Alarm Dialer

At our customer's request, the engineers have designed a Voice Alarm Dialer that is a smaller version of the popular **K-2000-DVA**.

The **K-202-DVA** is a fully programmable two input, multi-number auto dialer and digital announcer, designed for emergency and non-emergency message notification.

Here are the features of the new **Model K-202-DVA**:

- 2 messages (1 minute record time per input)
- Non-volatile memory (no batteries required)
- Stores up to seven 32-digit phone numbers per input
- Local or remote programming and recording

Beta units available.

Model **K-202-DVA**.....\$159.00



Fax back No. 305



What's improved in 2006½

Provide Convenient Handsfree Communication

The improved **E-10A** and **E-20B** are telephone line powered speaker phones designed to provide two-way handsfree communication. Both function identically, but are available in two different housings to better suit the application. When the "Call" button is pressed, the **E-10A** or **E-20B** will come off hook and will remain off-hook until a CPC signal is detected, the programmed time-out has elapsed, a busy signal is detected, or the call goes silent, making the unit automatically disconnect.

The **E-10A/20B** can be connected directly to a C.O. line or analog PBAX/KSU station when used with a **Viking Hot-Line dialer** or programmed ring down circuit. One, or up to four, **E-10A/20B** speaker phones can share an existing phone line in a house or small business when used with a **C-200** or **C-2000A** (respectively) Entry Phone Controllers.



E-10A



E-20B

New Features

- Alternate action call button to place or cancel a call
- Intelligent call progress detection for automatic hang-up on CPC, Silence, busy signal, or time out
- Programmable VOX (mic/speaker) switching speed
- **Available in Enhanced Weather Protection**

Model E-10A.....\$122.00

Model E-20B.....\$122.00



Fax back No. 210



K-1500-EHFA

- Works identical to **E-10A/E-20B**
- Designed to mount in a standard emergency phone enclosure (10" x 7" x 3")
- Not available in EWP.

Model K-1500-EHFA

.....\$122.00



Fax back No. 220

K-1900-7 and the K-1900-8 Now Available with Enhanced Weather Protection

The **K-1900-7** and the **K-1900-8** Hot-Line Panel Phones are now available with Enhanced Weather Protection. (EWP) for outdoor or harsh environments. The EWP versions include faceplate, transmitter and receiver gaskets, hand soldered silicon connections, gel filled Butt connectors, as well as a urethane potted circuit board.

Model K-1900-7.....\$256.00
Model K-1900-7-EWP.....\$376.00



Fax back No. 364

Model K-1900-8.....\$401.00
Model K-1900-8-EWP.....\$521.00



Fax back No. 362



K-1900-7-EWP



K-1900-8-EWP

Shown in surface mount box **VE-5x10**

Fax back No. 424

Talk Battery Booster

Boost Talk Battery and Loop Current to Line Powered Devices

- Modular connections for easy installation
- Automatic polarity correction
- X-10 wireless phone jack compatible
- **Compensates for systems that regulate (limit) loop current**



TBB-1A

The **TBB-1A** will boost talk battery and loop current on single analog line extensions behind PABX's and electronic key systems. This is helpful for powering line powered devices, such as dialers and emergency phones on low voltage and/or loop current extensions and **X-10** wireless phone jacks.

Model TBB-1A.....\$69.00



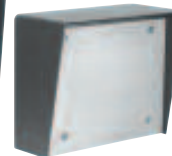
Fax back No. 630

Viking's VE-PNL's are the perfect solution to the problem of mounting a switch, keypad or card reader to the outside of a building. Built from 11 gauge steel, the back box provides the durable enclosure required for outdoor applications. The blank front panel is made from aluminum, making it easy to drill, cut or form for the required mounting arrangement. The panel

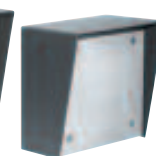
is straight lined and coated with a tough clear powder coating to resist corrosion. Four screws and a gasket are included to make installation a snap.



VE-5x10-PNL



VE-6x7-PNL



VE-5x5-PNL

Models VE-5x5-PNL.....\$89.00

VE-6x7-PNL.....\$96.00

VE-5x10-PNL.....\$109.00



Fax back No. 424

24 hour fax back: (715) 386-4345

Product and Application HelpLine:
 (715) 386-8861

VikingElectronics.com
 Help@VikingElectronics.com

 <p>Olivia Riecher</p>	 <p>E-50-SS (Page 2)</p>	 <p>Nolan Hewitt</p>
 <p>K-1500-EHFA (Page 3)</p>	<p>Look at what's New in 2006½</p>	 <p>FAXJ-1000 (Page 2)</p>
 <p>Smokey the Security Dog</p>	 <p>E-20B (Page 3)</p>	 <p>Shea Hewitt</p>

New Black and White Enclosure for Installing Viking Products Outdoors



Model VE-9x12 (B) and **VE-9x20 (B)** provide weather protection for **Viking** products.

These enclosures are constructed of die cast aluminum. They are made for years of outdoor service. The heavy-duty aluminum doors are labeled "Telephone" and have a gasket seal.

The **VE-9x12 (B)** 1 and 2, allows you to choose from two panels that allow mounting many different Viking products. The **VE-9x20 (B)** provides mounting for panel phones with handsets.

Both versions are also available in Emergency Red and Safety Yellow.

- Model VE-9x12(B)1.....\$260.00**
- Model VE-9x12(B)2.....\$260.00**
- Model VE-9x20(B).....\$395.00**



Fax back No. 413

VIKING® Products are in Stock Nationwide:

Graybar
800-825-5517
www.graybar.com

ADI
800-233-6261
www.adilink.com

Anixter
800-323-8167
www.anixter.com

Jenne Distributing
800-422-6191
www.jenne.com

TeleDynamics Corporation
800-847-5629
www.teledynamics.com

Target Distributing
800-873-5528
www.targeted.com

CSC/Famous Telephone Supply
800-321-9122
www.famoustelephone.com

**International Sales - Call:
Viking International
612-331-3823
www.vikingelectronics.com**

windstream Communications
800-533-3161 (US/CANADA)
www.windstreamsupply.com

Communications Supply
800-786-9584
www.gocsc.com

NTD Distributors
800-426-1024
www.shopntd.com

Power & Telephone
800-238-7514
www.ptsupply.com

Goldcom, Inc.
800-788-8848
www.Gold-com.com

High Tech Communication
800-256-3010
www.high-techcomm.com

Hall Telecommunications
519-822-5420
www.halltel.com
800-265-2667 (CANADA)

HB Distributors
800-266-3478
www.HBdistributors.com

Fax Back Form for Viking Electronics

Would you like a free 2006 complete Viking catalog or other information?
Photocopy this form, fill it in and **FAX TO: (715) 386-4344.**

PLEASE SEND:	NUMBER:
Free 2006 VIKING CATALOGS:	
Free Current NEWSLETTERS:	
Free PRODUCT GUIDES: • ADA in Plain English	
• Access Control/Door Entry	○
• Digital Announcers	
Free 2006 Catalog & Guides on CD:	

SEND TO:
Attention:
Company:
Address:
City/State/Zip:
Phone:

To PHONE in your order, call (715) 386-8861, 8am - 5pm CST.