

2007^{1/2}

SECURITY AND COMMUNICATION SOLUTIONS

Manufactured in the USA/
American Technical Support

See What's New in 2007^{1/2} on the Back Cover



DNA-510
Digital Mass Notification/Evacuation Announcer (Page 2)



K-1705-3
Video Entry Phone with Keypad (Page 2)



E-35
Handsfree Phone with Color CCTV Camera (Page 2)

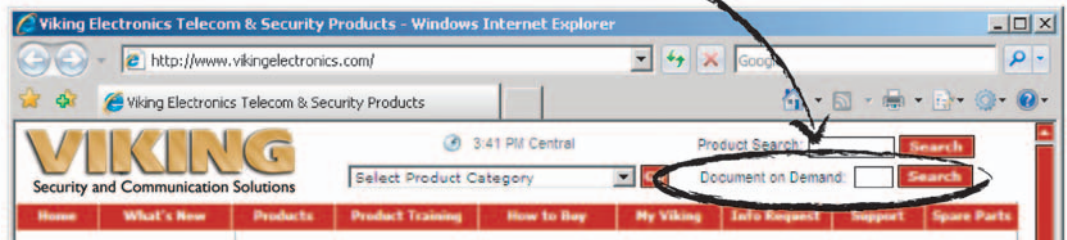
NEW: "Document On Demand" Search

Viking wants to make it easy for you to get the product information you need, so we've added a new search to our website called "Document On Demand" (DOD). All Viking catalogs and literature have "Fax Back Numbers" to allow information to be faxed to you through our automated system, now the same numbers can be entered on our homepage for a direct link to product cut sheets.

One number, two easy ways to get information: Online or FaxBack

Document on Demand:

Look for **DOD** numbers throughout this catalog!



Digital Mass Notification/ Evacuation Announcer

- Select From 10 Different Alert Tones
- Up to Two Minutes of Record Time

Model **DNA-510** is a cost effective digital mass notification/emergency announcer designed to work with a building or campus's existing paging system.

Model **DNA-510** can provide up to 10 different alert tones and up to 5 different digitally pre-recorded voice evacuation or lockdown instructions with a total record time of 2 minutes. Tones and messages can be repeated 1-99 times. The **DNA-510** connects to a phone line, VoIP adapter, PABX station, or line input and can be securely activated or reset from a remote location using a touch tone security code. A live page can also be broadcast.

When activated, the **DNA-510** will interrupt any current paging or background music and inject alert tones and emergency instructions over your paging system. **Power supply included.**

Alert Tone Applications:

- Evacuation
- Lockdown
- Severe Weather
- Hazardous Materials
- Terrorist Alert
- Fire
- Tornado
- Flash Flood
- All Clear



Model	Description	DOD #	Price
DNA-510	Mass Notification Announcer	492	\$249.00

Handsfree Phone with Color CCTV Camera

- Automatically Dials Five 1-20 Digit Numbers
- Audio and Video transmission on one CAT-5E cable

The **E-35** is designed for emergency and door or gate entry applications. The built-in, wide-angle, color video camera has both tilt and swivel adjustments.

When the "Call" button is pressed, the **E-35** automatically dials a pre-programmed number. The unit will dial up to 4 additional numbers if a busy signal or no answer is detected.

The **E-35** can be set up to auto-answer and disconnects on silence, busy, dial tone, CPC or time-out. Temperature range is -30°F to 150°F. Operates up to 150 feet on CAT-5E cable.

Power supply included.

Use with these Viking controllers*:

- C-200
- C-2000A

*When used with these controllers, the auto dialer function must be turned off.



Tilt, swivel, color camera

E-35 shown in optional **VE-5x5-SS** surface mount box

Model	Description	DOD #	Standard	EWP Model
E-35	Video Entry Phone with Dialer	178	\$401.00	\$521.00

Handsfree Entry Phone with Keypad and Color CCTV Camera

- High Resolution Color Camera with Wide Viewing Angle
- Audio and video transmission on one CAT-5E cable
- Metal Keypad

Use with these Viking controllers:

- C-2000A
- C-4000
- C-3000
- K-1900-3

The **K-1705-3** is designed for door, gate, office or apartment entry applications. When the Call button is pressed, the unit provides dial tone and the visitor can call an office, apartment or station. Keyless entry is available with a compatible **Viking** controller.

The unit disconnects on busy, return to dial tone, silence, CPC or call timer. Volume adjustment for microphone speaker is provided. **Power supply included.**



Tilt, swivel, color camera

K-1705-3 shown in optional **VE-6x7-SS** surface mount box

Model	Description	DOD #	Standard	EWP Model
K-1705-3	Video Entry Phone with Keypad	159	\$504.00	\$624.00



K-1200 shown in optional **VE-5x10-SS** surface mount box

12 Button Apartment Entry Phone with Built in Door Strike Relay

- Calling a particular tenant is as easy as pressing a single button

The **K-1200** Entry Phone is a two way, hands free telephone with 12 buttons for calling individual residences in an apartment building.

The rugged stainless steel faceplate has a printed directory housed in a water proof plastic lens. Each button is beside the tenant's name in the directory, so there are no confusing codes to deal with. The **K-1200** has a built in speed dialer that can handle up to 12 primary phone numbers, each with 32 digits. If there is no answer at the first number, a second number such as a tenant's cell phone, can be called automatically. Once the tenant answers their phone, a single touch tone command can activate the built in door strike relay. **Power supply included.**

Model	Description	DOD #	Standard	EWP Model
K-1200	12 Button Apartment Entry	182	\$495.00	\$615.00

Weather-Resistant Outside Doorboxes with Color CCTV Camera

- Provides 24 Volt Talk Battery and 20 Hz Ring Generator for Phone System Unused Line Input Applications
- Door/Gate entry system for any phone system
- Doorboxes generate up to 30 rings on your telephones when the "Call" button is pressed

Provide your business or residential customers with the security and convenience of conversing with visitors from their own phone prior to allowing entry. Ideal for night doors, shipping/receiving departments, warehouses, residential applications or any security-sensitive entry. Designed to install on an unused trunk line input on Electronic or 1A2 Key, single or multi-line "No KSU" phones and PABX. When the "Call" button is pressed, the unit rings the phones up to 30 times (adjustable) or until answered. Microphone volume adjustment is provided.

The doorboxes provide 24V talk battery permitting loop lengths in excess of 6300 ft., using 24 AWG twisted pair. The **included power supply** can be mounted up to 150 ft. from the unit using 24 AWG twisted pair. The units provide 3 REN output (enough to ring six .5 REN phones). To ring additional phones use model **RG-10A** Ring Booster.

Use with this Viking controller:
• C-1000B



Tilt, swivel, color camera

W-3005

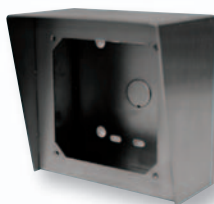
W-3005 shown in optional **VE-5x5-SS** surface mount box

Model	Description	DOD #	Standard	EWP Model
W-3005	Stainless Steel Video Doorbox	181	\$370.00	\$490.00

For more information on Enhanced Weather Protection (EWP) request **DOD # 859**.

Vandal and Weather Resistant Surface Mount Boxes – Now Available in Stainless Steel.

The **VE-Series** surface mount boxes are stainless .062 steel. They are designed to surface mount to a single gang electrical box, a gooseneck pedestal or directly to a wall.



VE-5x5-SS



VE-6x7-SS



VE-5x10-SS

Model	Description	DOD #	Price
VE-5x5-SS	5x5 Stainless Steel Surface Mount Box	424	\$129.00
VE-6x7-SS	6x7 Stainless Steel Surface Mount Box	424	\$166.00
VE-5x10-SS	5x10 Stainless Steel Surface Mount Box	424	\$210.00

VIKING 2007 1/2

Product and Application Helpline: (715) 386-8861

DOD (Document On Demand) One number, two easy ways to get information: Online or Faxback

What's New!



Model DNA-510

Digital Mass Notification/ Evacuation Announcer

(page 2) **DOD # 492**



Model K-1705-3

Handsfree Entry Phone with Keypad and Color CCTV Camera

(page 2) **DOD # 159**



Model E-35

Handsfree Phone with Color CCTV Camera

(page 2) **DOD # 178**



Model K-1200

12 Button Apartment Entry Phone

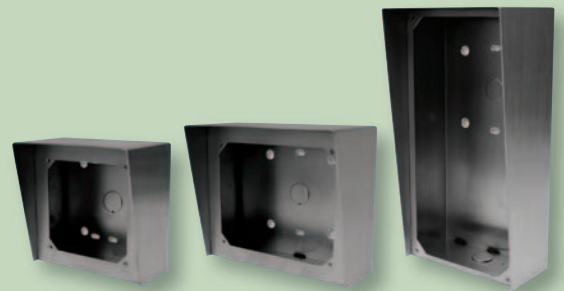
(page 3) **DOD # 182**



Model W-3005

Weather Resistant Outside Doorboxes with Color CCTV Camera

(page 3) **DOD # 181**



VE-5x5-SS

**Models
VE-6x7-SS**

VE-5x10-SS

Vandal and Weather Resistant Surface Mount Boxes

(page 3) **DOD # 424**

VIKING® Products are in
Stock Nationwide:

Graybar
800-825-5517 www.graybar.com

ADI
800-233-6261 www.adilink.com

Anixter
800-323-8167 www.anixter.com

Jenne Distributing
800-422-6191 www.jenne.com

TeleDynamics Corporation
800-847-5629 www.teledynamics.com

Target Distributing
800-873-5528 www.targetdist.com

Windstream Supply
800-533-3161 (US/CANADA)
www.windstreamsupply.com

International Sales - Call:
Viking International
612-331-3823
www.vikingelectronics.com

Communications Supply
800-786-9584 www.gocsc.com

Hall Telecommunications
519-822-5420 www.halltel.com
800-265-2667 (CANADA)

Goldcom, Inc.
800-788-8848
www.Gold-com.com

Capitol Sales
800-467-8255
www.capitolsales.com

NTD Distributors
800-426-1024
www.ShopNTD.com

HB Distributors
800-266-3478
www.HBdistributors.com

High Tech Communication
800-256-3010
www.high-techcomm.com

Power & Telephone
800-238-7514 www.ptsupply.com

Send Free Copies of:

2007 Complete Product Catalog: _____ Priced
(number) Unpriced
 Campus Security Products Catalog: _____ Priced
(number) Unpriced
 Home Communications Products Catalog: _____ Priced
(number) Unpriced
 2007 Catalog on CD: _____
(number)
 Latest Monthly Newsletter: _____
(number)

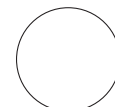
Send To:

Attention: _____

Company: _____

Address: _____

City/State/Zip: _____



Fax this Form to: 715-386-4344

To PHONE in your request: 715-386-8861. To EMAIL your request: info@vikingelectronics.com