

# 2008<sup>1</sup>/<sub>2</sub>

## 259 PRODUCTS

that can solve your telecom and security problems.

# U

# N

# E

# V

# E

# N

# S

St. Paul, MN

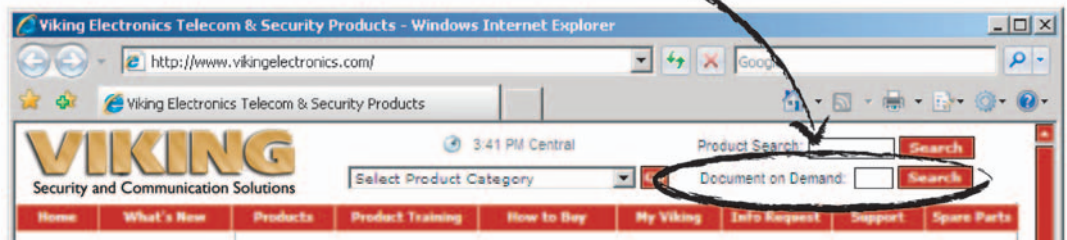
### NEW: "Document On Demand" Search

Viking wants to make it easy for you to get the product information you need, so we've added a new search to our website called "Document On Demand" (DOD). All Viking catalogs and literature have "Fax Back Numbers" to allow information to be faxed to you through our automated system, now the same numbers can be entered on our homepage for a direct link to product cut sheets.

**One number, two easy ways to get information: Online or FaxBack**

Document on Demand:

Look for **DOD** numbers throughout this catalog!



## Add Paging & CD-Quality Door Chimes to Your Home Audio System

- This advanced system also allows phone-to-phone intercom and loud ringing via the audio system.

The **SLP-4** Single Line Paging controller will allow you to page family members or co-workers from any phone in your home or small office. The pages can be heard over the same speakers that are installed for multi-zone music distribution.

The **SLP-4** provides inputs for 4 lighted doorbell switches. The inputs select 4 different CD quality sounds from a library of eight pre-recordings including Westminster 8, 4, 3, 2 bell chimes, barking dog, etc. Alternatively, users may record their own CD quality sounds into the **SLP-4** from their PC's USB port. When the doorbell switch is pressed, the music is muted while the appropriate sound is heard over the system speakers.

The **SLP-4** connects in series with a single existing phone line. The unit has a built-in 2 watt amplifier, pre-amp output, music on hold input, intercom features, and selectable loud ringing.



Model	DOD #	Price
<b>SLP-4</b>	<b>479</b>	\$389.00

## Generate CPC Disconnect Signals on Four Separate Phone Lines

The **CPC-4** has 4 independent channels of CPC generation. Each channel will generate a CPC disconnect signal on a PABX analog station (or any other line that does not provide this signal).



A CPC (Calling Party Control) signal is a momentary break in phone line loop current, which is used to signal automated telco equipment (ie. voice mail, call sequencers, etc.) the distant party has hung up. Central Office telephone lines typically provide this signal, but Analog PABX stations do not.

The **CPC-4** will generate a 1 second disconnect when it detects a busy signal, reorder tones (fast busy), return to dial tone, or silence.

Model	DOD #	Price
<b>CPC-4</b>	<b>444</b>	\$235.00

## Securely Operate a Down stroke and Provide Keyless Entry

The **SRC-1** enables a standard touch tone phone to securely operate a set of timed relay contacts to control a down stroke or gate controller at a remote location. The **SRC-1** is fully user programmable and uses non-volatile memory. The **SRC-1** eliminates the possibility of dialing the activation code through the entry phone using a hand held touch tone dialer.

The **SRC-1** features a switchable 32V talk battery to allow use with any of Viking's entry phones (**E** Series), door boxes (**W** Series) or hot-line/panel phones (**K** Series).

Some older Non-Viking access control Apartment entry systems require a 100 ms or longer DTMF signal for a door release. These systems may stop operating if your cordless phone, cell phone or VoIP provider now only provides a 50 ms DTMF burst regardless of how long the phone button is pressed. The solution is to install a **SRC-1** in parallel with the old system and use a two digit code. Example "9,9" instead of "9".

### Secure control of:

- High security building entry systems
- Door strikes and gates openers in conjunction with door boxes and entry phones.



Model	DOD #	Price
<b>SRC-1</b>	<b>176</b>	\$145.00

The **SRC-1** has a postal input and also provides up to 32 keyless entry codes to operate the relay from the entry phone with 1 to 6 digits. This feature can be disabled in programming for increased security

## K-1700-3, K-1705-3 Now Available in "Oil Rubbed Bronze"

- Hands Free Entry Phone with Built-in Keypad - Video Version (K-1705-3-BN) also available



Model	DOD #	Price	EWP Model
K-1700-3-BN	157	\$329.00	\$475.00
K-1705-3-BN	157	\$529.00	\$649.00

## Panasonic Doorphone Station Adapter

Allows Viking Models **E-10A, E-20B, E-30, E-35, E-40, and E-50** etc. to be connected in place of a Panasonic KX-T30865 or KX-T7775. **Power supply included.**



Model	DOD #	Price
PAN-1	145	\$65.00

## Standard Outdoor Enclosures for Installing Telecom Products



**VE-9x12 (R, Y or B)-0** provides weather protection for any Telecom or Security Product

- Parking Lots
- Swimming Pools
- Playgrounds
- Roadside Help Areas
- Maintenance Areas
- College Campuses
- Hospitals
- Building Exteriors

These enclosures are constructed of cast aluminum. They are made for years of outdoor service. The heavy-duty aluminum doors are labeled "Telephone" and have a gasket seal.

**VE-9X12 (R, Y or B)-1 & -2** are also available with mounting kits for many Viking or other Telecom/Security products.

Model	DOD #	Price
VE-9x12 (R, Y or B)-0	413	\$185.00
VE-9x12 (R, Y or B)-1	413	\$280.00
VE-9x12 (R, Y or B)-2	413	\$280.00

## Analog Line-Sharing Device for IP PBX's, VoIP Phone Systems

The **LS-911** Line Seizure device offers a cost-effective, reliable method of handling 911 emergency calls for IP PBX's and networked phone systems. Designed to be hooked up to an FXO port, it lets you enjoy the advantages of conventional analog 911 service, including traceability and 911 callback, without having to dedicate an analog line exclusively for this purpose.

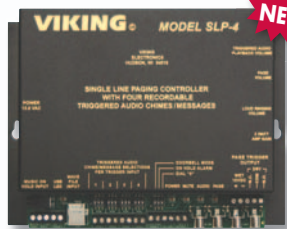
The analog line, normally used by a fax machine, card reader or other analog device, is disconnected in the event of a 911 call, and the **LS-911** intelligently handles the priority emergency call in the shortest time possible after reconnection to the phone line.

A special 911 recall feature maintains the availability of the line in the event the emergency call is disconnected, so 911 personnel can call back to reestablish the connection.



Model	DOD #	Price
LS-911	238	\$149.00

# What's New!



**NEW**

**SLP-4**  
Advance Single Line  
Paging Adapter

Model	DOD #	Price
<b>SLP-4</b>	<b>479</b>	\$389.00



**NEW**

**SRC-1**  
Secure Remote Relay Controller

Model	DOD #	Price
<b>SRC-1</b>	<b>176</b>	\$145.00



**NEW**



**NEW**



**NEW**

**VE-9x12 (R, Y or B)-0**  
Standard Outdoor Enclosures for Installing  
Telecom Products

Model	DOD #	Price
<b>VE-9x12 (R, Y or B)-0</b>	<b>413</b>	\$185.00



**NEW**

**CPC-4**  
Generate a CPC of  
Four Separate Lines

Model	DOD #	Price
<b>CPC-4</b>	<b>444</b>	\$235.00



**NEW**

**LS-911**  
Analog Line-Sharing Device for IP  
PBX's, VoIP Phone Systems

Model	DOD #	Price
<b>LS-911</b>	<b>238</b>	\$149.00



**NEW**

**PAN-1**  
Panasonic Doorphone  
Station Adapter

Model	DOD #	Price
<b>PAN-1</b>	<b>145</b>	\$65.00

**VIKING®** Products are in  
Stock Nationwide:

**Graybar**  
800-825-5517 • www.graybar.com

**ADI**  
800-233-6261 • www.adilink.com

**Anixter**  
800-323-8167 • www.anixter.com

**Jenne Distributing**  
800-422-6191 • www.jenne.com

**TeleDynamics Corporation**  
800-847-5629 •  
www.teledynamics.com

**Target Distributing**  
800-873-5528 •  
www.targetdist.com

**Windstream Supply**  
800-533-3161 (US/CANADA)  
www.windstreamsupply.com

**International Sales - Call:**  
**Viking International**  
**612-331-3823**  
**www.vikingelectronics.com**

**Communications Supply**  
800-786-9584 • www.gocsc.com

**Hall Telecommunications**  
519-822-5420 •  
www.halltel.com  
800-265-2667 (CANADA)

**Goldcom, Inc.**  
800-788-8848 • www.Gold-  
com.com

**Capitol Sales**  
800-467-8255 •  
www.capitolsales.com

**NTD Distributors**  
800-426-1024 •  
www.ShopNTD.com

**HB Distributors**  
800-266-3478 •  
www.HBdistributors.com

**High Tech Communication**  
800-256-3010 •  
www.high-techcomm.com

**Power & Telephone**  
800-238-7514 •  
www.ptsupply.com

## Send Free Copies of:

- 2008 Complete Product Catalog: \_\_\_\_\_  Priced  
 \_\_\_\_\_  Unpriced  
 (number)
- Campus Security Products Catalog: \_\_\_\_\_  Priced  
 \_\_\_\_\_  Unpriced  
 (number)
- Home Communications Products Catalog: \_\_\_\_\_  Priced  
 \_\_\_\_\_  Unpriced  
 (number)
- 2008 Catalog on CD: \_\_\_\_\_  
 (number)
- Latest Monthly Newsletter: \_\_\_\_\_  
 (number)

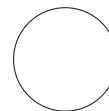
## Send To:

Attention: \_\_\_\_\_

Company: \_\_\_\_\_

Address: \_\_\_\_\_

City/State/Zip: \_\_\_\_\_



# Fax this Form to: 715-386-4344

To PHONE in your request: 715-386-8861. To EMAIL your request: info@vikingelectronics.com