

VIKING

Electronics Monthly

Reliable Products for Your Security and Communication Needs

VOLUME 29 : ISSUE 2 FEBRUARY 2017

SPOTLIGHT: IP Entry Phones

Viking offers everything from basic one-button entry phones to complete all-in-one door entry systems that include cameras and proximity readers!

Basic IP Entry Phones

- Easy to use one-button operation
- SIP compliant
- PoE powered (class 1)
- 2 Amp relay contacts for door or gate control
- Enhanced Weather Protection (EWP) models available, meet IP66 Ingress Protection Rating
- Automatic Noise Canceling (ANC) for noisy environments
- Network downloadable firmware
- Dial up to 5 numbers on busy or ring no answer
- Hangs up on busy, time-out or touch tone command
- Operating temperature range: -40°F to 140°F

Model E-10-IP

Heavy-duty black powder painted aluminum faceplate
Flush mount or use with a VE-5x5 Surface Mount Box, sold separately



Model E-20-IP

UV stable light gray impact resistant plastic chassis
Surface mount only



Model E-30-IP

Heavy-duty brushed 316 stainless steel faceplate
Flush mount or use with a VE-5x5 Surface Mount Box, sold separately



Model E-32-IP

Heavy-duty brushed 316 stainless steel faceplate
Double gang flush mount or use with a VE-5x5 Surface Mount Box, sold separately



Model E-35-IP

Built-in analog video camera
Flush mount or use with a VE-5x5 Surface Mount Box, sold separately



Model E-60-BN-IP

Vandal resistant 18 gauge 304 stainless steel faceplate
Available in 4 finishes
Flush mount or use with a VE-5x5 Surface Mount Box, sold separately



QUESTION: What's the main difference between analog phone service and voice over IP phone service?

ANSWER: It's the way the voice signals are delivered. The analog phone service carries signals over a dedicated pair of copper wires while the VoIP service delivers these signals over an IP data network.

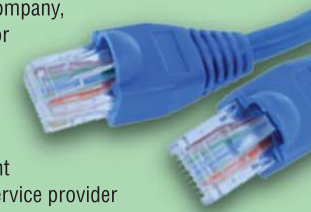
Here's the breakdown...

Analog Phone Service: An analog telephone is the traditional landline phone service that is still found in homes and businesses today. Also commonly known as Plain Old Telephone Service (POTS), analog phone service allows subscribers to communicate with one another.

How does it work? An analog telephone converts the voice signals into varying voltage levels. These levels travel as waves over the telephone line until they reach the end destination, where the speaker converts them back into sound. This means only one phone call can be on the pair of wires at one time, so a business usually installs several phone lines to handle multiple calls at once.

VoIP Phone Service: VoIP, which stands for Voice over Internet Protocol, offers phone service over an IP data network – typically the internet. While analog telephone subscribers receive a connection from their local phone company, VoIP allows for phone service via an internet connection and an account with a VoIP service provider that can be located anywhere.

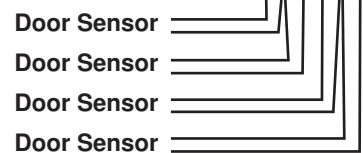
How does it work? A VoIP phone converts the voice signals into digital signals. These can then be delivered over the internet. The receiving VoIP phone converts these digital signals back into varying voltage levels for the speaker. Multiple VoIP phone calls can use a single internet connection, saving installation costs and monthly service fees.



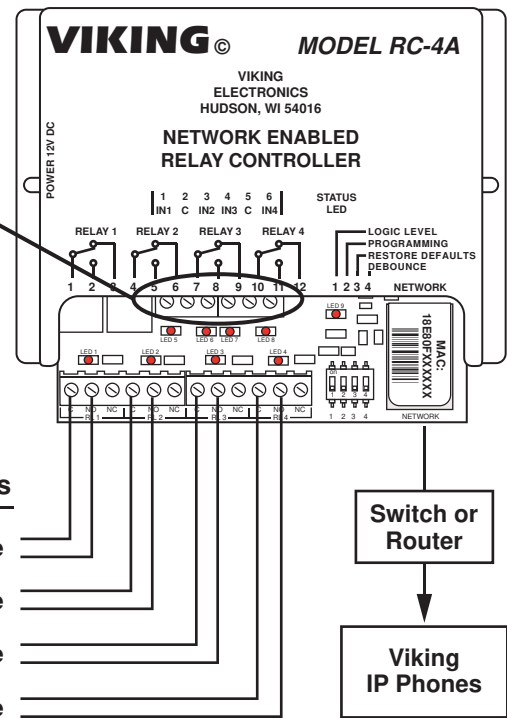
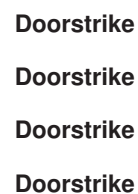
TECH TIPS

For extra security when opening a door using a Viking IP phone, the RC-4A can be configured to work as a remote relay, controlling door strikes and gates when the relay is required to be inside the building for security reasons.

Sensor Examples



Relay Examples

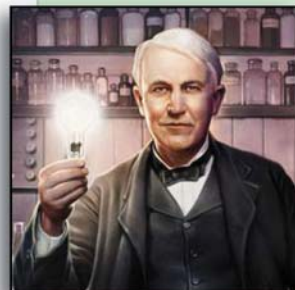


For more information on model RC-4A, go to: www.VikingElectronics.com and retrieve DOD 582

or SCAN here



This month in Technology History



On February 11, 1847: American Inventor Thomas Edison was born in Milan, Ohio. Throughout his lifetime he acquired over 1,200 patents including the incandescent bulb, phonograph and movie camera.

But Edison is probably best known for this quote: "Genius is one percent inspiration and ninety-nine percent perspiration."



On February 14, 1978: Texas Instruments patented the first "Micro on a Chip". Gary Boone and Michael Cochran designed the chip and then led the group to patent it. This chip was used in multiple inventions

such as garage door openers, burglar alarms, and many electronic toys. Eventually the chip was the foundation for speech synthesis which would be used in the Texas Instrument's Speak & Spell.

FUN FACT: The Speak & Spell was a big part of the blockbuster movie "E.T. the Extra Terrestrial".



TRIVIA QUESTION

The McCarran International Airport serves what famous city?

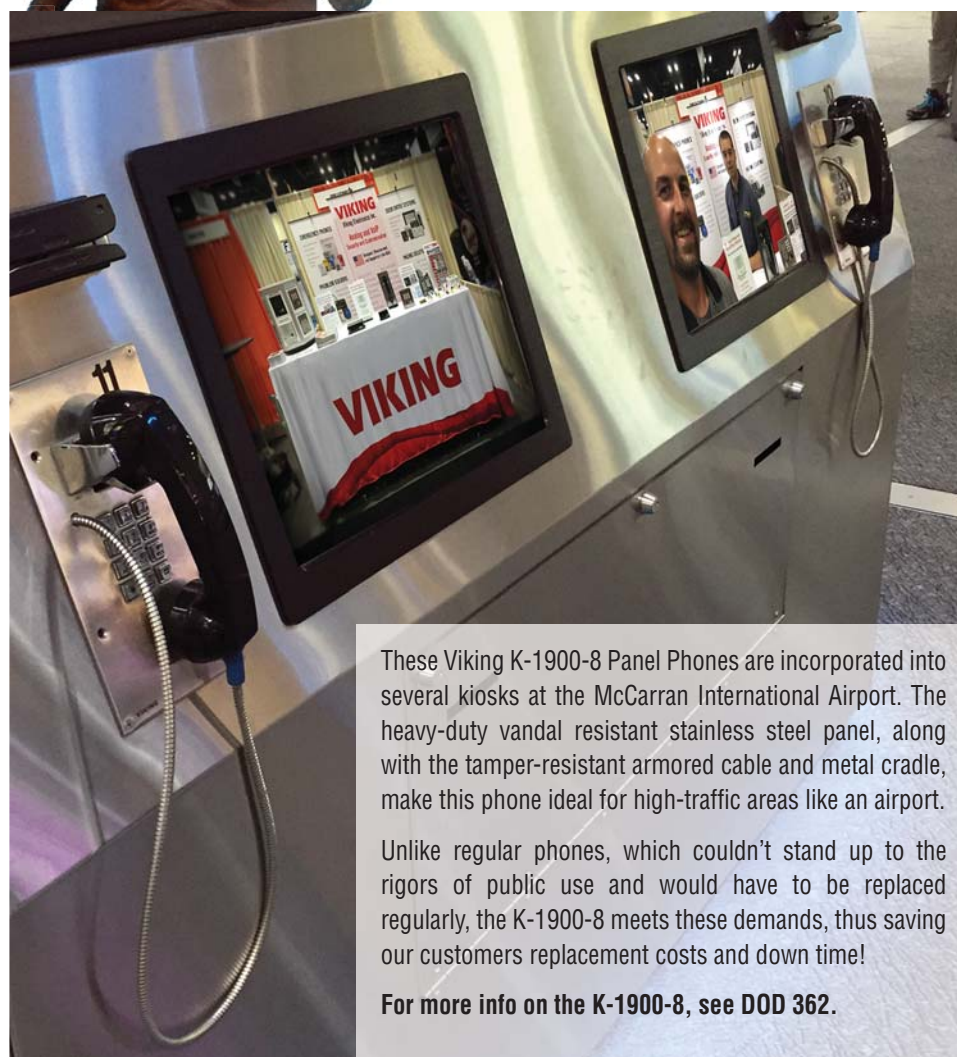


Everyone who calls, emails, or faxes in the correct answer by FEBRUARY 28, 2017 will be entered into a drawing for a delicious cheese assortment shipped fresh direct from the Bass Lake Cheese Factory!

JANUARY TRIVIA:
What year did the Minnesota Zoo open?

ANSWER: 1978

CONGRATULATIONS to
DEAN KUHARSKE from Canyon Telecom!



These Viking K-1900-8 Panel Phones are incorporated into several kiosks at the McCarran International Airport. The heavy-duty vandal resistant stainless steel panel, along with the tamper-resistant armored cable and metal cradle, make this phone ideal for high-traffic areas like an airport.

Unlike regular phones, which couldn't stand up to the rigors of public use and would have to be replaced regularly, the K-1900-8 meets these demands, thus saving our customers replacement costs and down time!

For more info on the K-1900-8, see DOD 362.

Complete IP Door Entry Systems

All IP Models Below Feature:

- SIP compliant and PoE powered (class 2, <6.5 watts)
- Two sets of SPDT 2 Amp relay contacts for door/gate or camera control
- Network downloadable firmware
- Automatic Noise Canceling (ANC) feature for operation in noisy environments
- Blue "Call / Status" LED indicator
- Heavy-duty 14 gauge louvered 316 marine grade stainless steel faceplate
- Heavy duty sealed metal keypad
- T-10 Torx security mounting screws

- Flush mount with the included zinc-plated steel rough-in box
- Enhanced Weather Protection (EWP) models available, designed to meet IP66 Ingress Protection Rating
- Remotely programmable
- Program up to 1,000 keyless entry codes and/or proximity card numbers
- Keyless entry codes and proximity card numbers can be programmed to only allow access at specific times and day of week
- Event logging with time and date stamp
- Programmable microphone and speaker volume
- Operating temperature: -40°F to 140°F

K-1200-IP Series

- 12 buttons speed dial up to 20 digits each, with 12 rollover numbers
- Easy one button push operation
- Built-in custom tenant directory
- Hangs up on busy signal, time-out or touch tone command
- Selectable auto-answer feature for monitoring
- Surface mount with an optional Viking VE-5x10 Surface Mount Box, sold separately
- Permanent laser etched graphics

Model K-1200-IP	Model K-1205-IP	Model K-1270-IP	Model K-1275-IP
Standard model with built-in vandal resistant directory and 12 button keypad (DOD 271)	Built-in analog color camera with tilt and swivel adjustment (DOD 272)	Built-in proximity card reader, 26-bit Wiegand format compatible (DOD 273)	Built-in analog color camera and proximity card reader, 26-bit Wiegand format (DOD 274)

K-1700-IP Series

- Two finishes available: Brushed Stainless Steel or Oil Rubbed Bronze (BN)
- Stainless steel "Call" button
- Permanent laser etched graphics on Brushed Stainless Steel models
- Speed dial up to 250 numbers
- Cycles to rollover number on busy or no-answer
- Surface mount with an optional Viking VE-6x7 Surface Mount Box, sold separately

Model K-1700-IP	Model K-1705-IP	Model K-1770-IP	Model K-1775-IP
Standard model with vandal resistant faceplate and built-in heavy-duty stainless steel keypad (DOD 253)	Built-in analog color camera with 420 lines of resolution and 80° viewing angle, tilt and swivel adjustment (DOD 254)	Built-in proximity card reader, 26-bit Wiegand format, compatible with Viking proximity credentials (DOD 257)	Built-in analog color camera and built-in proximity card reader, 26-bit Wiegand format (DOD 258)

ON THE CALENDAR

Channel Partners

Las Vegas, NV
channelpartnersonline.com
April 11-13, 2017

ISC West

Las Vegas, NV
iscwest.com
April 5-7, 2017

Enterprise Connect 17

Orlando, FL
enterpriseconnect.com
March 27-29, 2017

NFMT 2017

Baltimore, MD
www.nfmt.com
March 7-9, 2017

ITEXPO 2017

Ft. Lauderdale, FL
itexpo.tmcnet.com
February 8-10, 2017

Contact Viking

CALL: 715-386-8861

VISIT: www.VikingElectronics.com

EMAIL: info@VikingElectronics.com

FAX: 715-386-4344

Sign up for
our email
newsletter,
SCAN HERE



Published by VIKING ELECTRONICS, INC.
For CUSTOMER SERVICE, call: 715-386-8861

To UNSUBSCRIBE, please send an email to: mailings@vikingelectronics.com
Include your mailing address and we will promptly honor your request.

© VIKING ELECTRONICS, INC. All rights reserved.

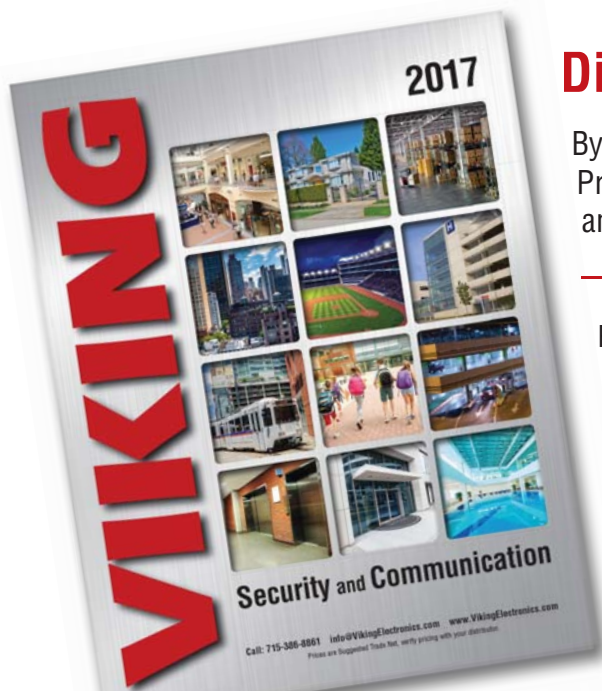
PLEASE NOTE: Viking Electronics is dedicated to protecting your privacy.
We will never share or sell your personal information.

VIKING

VIKING ELECTRONICS, INC.

1531 Industrial Street, Hudson, Wisconsin 54016
Phone: 715-386-8861 www.vikingelectronics.com

PRINTED IN THE USA

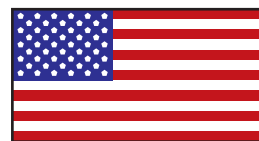


Did you get one?

By now you should have received your 2017 Viking Product Catalog. If you didn't get one - let us know and we will send a catalog out to you right away!

Remember - our products are **made here in the USA**. We stand behind our products with a 2 year limited warranty and free lifetime product support.

For more than 48 years Viking has been supplying the security and communications industry with reliable, high-quality **American-made** products.



WHAT'S INSIDE?

- From simple to all-inclusive, discover Viking's IP Entry Phones
- Learn the basics of Analog vs IP
- Find out which Viking panel phones work great in kiosks