

# VIKING PRODUCT MANUAL

SECURITY &amp; COMMUNICATION SOLUTIONS

**PA-IP****SIP / Multicast Paging Adapter with Amplifier**

May 22, 2019

## PoE Powered VoIP Endpoint Interfaces Analog Paging Systems with SIP and Multicast Paging Sources

The Viking model **PA-IP** SIP / Multicast Paging Adapter provides an interface between new VoIP phone systems (hardware or hosted/cloud based) and analog paging systems, eliminating the need for an ATA or FXS port. The **PA-IP** can be used for standard SIP endpoint paging or multicast paging and multicast background music.

The unit easily connects with a single CAT5/6 cable from your PoE switch. The night ring feature is programmable for time of day and day of week to enable loud ringing for after hour incoming calls. Alternatively the night ring feature can be enabled by a contact closure across the trigger input terminals. Line-level audio output connections are provided for connecting to an external amplifier.



A built-in 6 Watt class D amplifier with speaker output connections are also provided to drive up to six analog speakers. A programmable relay output is provided for triggering external amplifiers, etc.

**⚠ Installation requires a Network Administrator / IT Technician**

### Features

- SIP compliant (See page two for list of compatible SIP servers and IP phone systems)
- PoE powered (class 3, <13 Watts)
- Paging prioritization
- Plays audio from multicast
- SIP endpoint or multicast group member
- Supports up to ten multicast paging groups
- Red "Page/Status" LED indicator
- Network downloadable firmware
- Built-in high efficiency 6 Watt class D amplifier
- Can drive up to 6 external analog speakers
- Relay for activating door locks, strobe lights, external amplifiers, etc.
- SIP/Multicast: SIP page, SIP page and zoned multicast receive
- Support for access code to prevent unwanted SIP calls
- Line-level audio output for connecting to an external amplifier
- Network remote volume control
- Diagnostics (for testing the relay)
- Programmable pre page alert tone

### Applications

- Amplified SIP endpoint or multicast IP paging for: schools, hospitals, retail stores, office spaces, etc.
- Provide multicast background music and sound masking
- IP phone system integration with traditional analog amplifier (e.g. single zone voice paging)

### Specifications

**Power:** PoE class 3 (<13 Watts)

**Dimensions:** 5" x 5.25" x 1.5" (127mm x 133mm x 38mm)

**Shipping Weight:** 1.0 lbs (0.45 kg)

**Operating Temperature:** -40°F to 140°F (-40° C to 60° C)

**Humidity:** 5% to 95% non-condensing

**Audio Codecs:** G711u, G722\* and G711a\*

**Network Compliance:** IEEE 802.3 af PoE, SIP 2.0 RFC3261, 100BASE-TX with auto cross over

**Frequency Response:** 55 – 18,000 Hz (+/- 10 dB)

**Connections:** (1) RJ45 10/100 Base-T, (1) 8 position terminal block

**Amplifier:** 6 Watt Class D (capable of driving up to six 8 Ohm speakers connected in parallel)

**Maximum Output Level driving one Viking Model 40AE Ceiling Speaker:** 105 dB SPL @ 1M

*\*NOTE: The PA-IP does not support multicast paging using the G722 or G711a Codec.*



## Definitions

**Client:** A computer or device that makes use of a server. As an example, the client might request a particular file from the server.

**DHCP:** Dynamic Host Configuration Protocol. In this procedure the network server or router takes note of a client's MAC address and assigns an IP address to allow the client to communicate with other devices on the network.

**DNS Server:** A DNS (Domain Name System) server translates domain names (ie: www.vikingelectronics.com) into an IP address.

**Ethernet:** Ethernet is the most commonly used LAN technology. An Ethernet Local Area Network typically uses twisted pair wires to achieve transmission speeds up to 1Gbps.

**Host:** A computer or device connected to a network.

**Host Name:** A host name is a label assigned to a device connected to a computer network that is used to identify the device in various forms of network communication.

**Hosts File:** A file stored in a computer that lists host names and their corresponding IP addresses with the purpose of mapping addresses to hosts or vice versa.

**Internet:** A worldwide system of computer networks running on IP protocol which can be accessed by individual computers or networks.

**IP:** Internet Protocol is the set of communications conventions that govern the way computers communicate on networks and on the Internet.

**IP Address:** This is the address that uniquely identifies a host on a network.

**LAN:** Local Area Network. A LAN is a network connecting computers and other devices within an office or building.

**Lease:** The amount of time a DHCP server reserves an address it has assigned. If the address isn't used by the host for a period of time, the lease can expire and the address can be assigned to another host.

**MAC Address:** MAC stands for Media Access Control. A MAC address, also called a hardware address or physical address, is a unique address assigned to a device at the factory. It resides in the device's memory and is used by network equipment to send data packets to the correct IP address. You can find the MAC address of your **PA-IP** page adapter printed on a white label on the bottom side of the chassis.

**Router:** A device that forwards data from one network to another. In order to send information to the right location, routers look at IP Address, MAC Address and Subnet Mask.

**RTP:** Real-Time Transport Protocol is an Internet protocol standard that specifies a way for programs to manage the real-time transmission of multimedia data over either unicast or multicast network services.

**Server:** A computer or device that fulfills requests from a client. This could involve the server sending a particular file requested by the client.

**Session Initiation Protocol (SIP):** Is a signaling communications protocol, widely used for controlling multimedia communication sessions such as voice and video calls over Internet Protocol (IP) networks. The protocol defines the messages that are sent between endpoints, which govern establishment, termination and other essential elements of a call.

**Static IP Address:** A static IP Address has been assigned manually and is permanent until it is manually removed. It is not subject to the Lease limitations of a Dynamic IP Address assigned by the DHCP Server. The default static IP Address is: **192.168.154.1**

**Subnet:** A portion of a network that shares a common address component. On TCP/IP networks, subnets are defined as all devices whose IP addresses have the same prefix. For example, all devices with IP addresses that start with 100.100.100. would be part of the same subnet. Dividing a network into subnets is useful for both security and performance reasons. IP networks are divided using a subnet mask.

**TCP/IP:** Transmission Control Protocol/Internet Protocol is the suite of communications protocols used to connect hosts on the Internet. TCP/IP uses several protocols, the two main ones being TCP and IP. TCP/IP is built into the UNIX operating system and is used by the Internet, making it the de facto standard for transmitting data over networks.

**TISP:** Telephone Internet Service Provider

**WAN:** Wide Area Network. A WAN is a network comprising a large geographical area like a state or country. The largest WAN is the Internet.

**Wireless Access Point (AP):** A device that allows wireless devices to connect to a wired network using Wi-Fi, or related standards. The AP usually connects to a router (via a wired network) as a standalone device, but it can also be an integral component of the router itself.

**Wireless Repeater (Wireless Range Extender):** takes an existing signal from a wireless router or access point and rebroadcasts it to create a second network. When two or more hosts have to be connected with one another over the IEEE 802.11 protocol and the distance is too long for a direct connection to be established, a wireless repeater is used to bridge the gap.

# Features Overview



**Green Unit Status LED**

**Red Page / Status LED**

**Reset Button**

**PoE LAN Port 10/100, PoE Class 3 (<13 Watts):** Connect to your LAN via RJ45 plug and CAT5 or greater twisted pair wire.

**Yellow Network Status LED:** Lights steady to indicate power and data link. Blinks to indicate network activity.

**Relay Output Contact (2A@30VDC / 250VAC max):** Connect to trigger input of amplifier, etc.

**Switch or Contact Input:** To manually trigger Night Ring

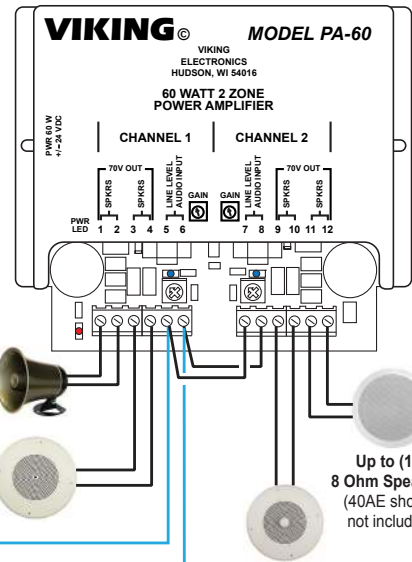


**Line Out 600 Ohm Paging Audio**

Up to (15) 8 Ohm Speakers (25AE shown, not included)

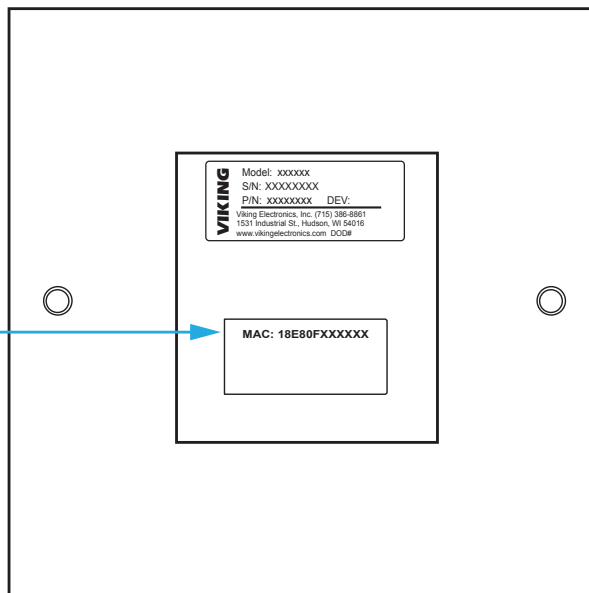
Up to (15) 8 Ohm Speakers (30AE shown, not included)

**Optional Paging Amplifier**  
Viking model PA-60 shown (DOD 493)



Up to (15) 8 Ohm Speakers (35AE shown, not included)

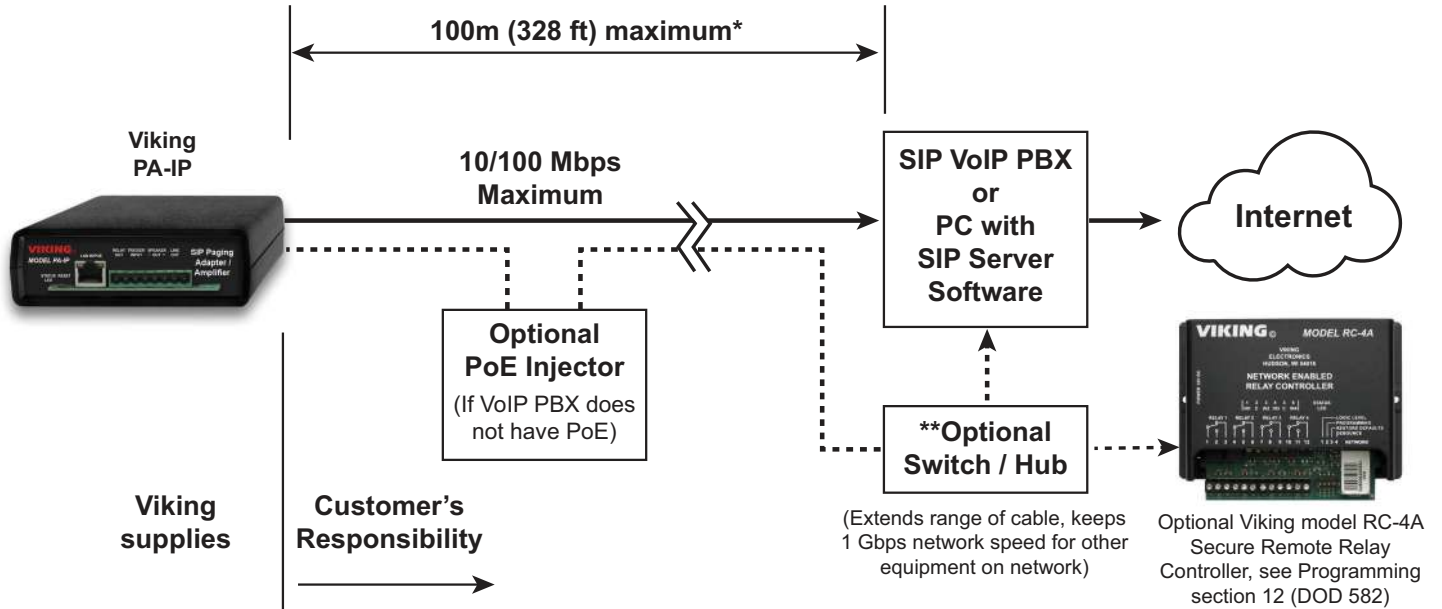
### Bottom View



**MAC Address Label:**

The MAC address is a unique 12 digit number used by network equipment to send data packets to the correct IP address.

## Typical Installation on SIP Based VoIP Phone System



\* **Note:** A PoE extender can be used for an additional 100 meters per extender. For longer runs (up to 2 km / 1.2 miles) a ethernet to fiber media converter can be used.

### \*\* Network Port Settings

- Make sure the port is not in trunk mode
- Make sure port is capable of 100mbps full duplex
- Disable Spanning Tree Protocol (STP) or enable Portfast

## PC Requirements

- **IBM** compatible personal computer with: Windows 7, 8 or 10
- Adobe Acrobat Reader 8 or higher
- **PA-IP** hardware
- Available LAN with PoE (class 3, <13 Watts)
- Ethernet cable (CAT5 minimum)
- 1 MB minimum free hard drive space for installation
- 16MB of free physical RAM

## PC Programming

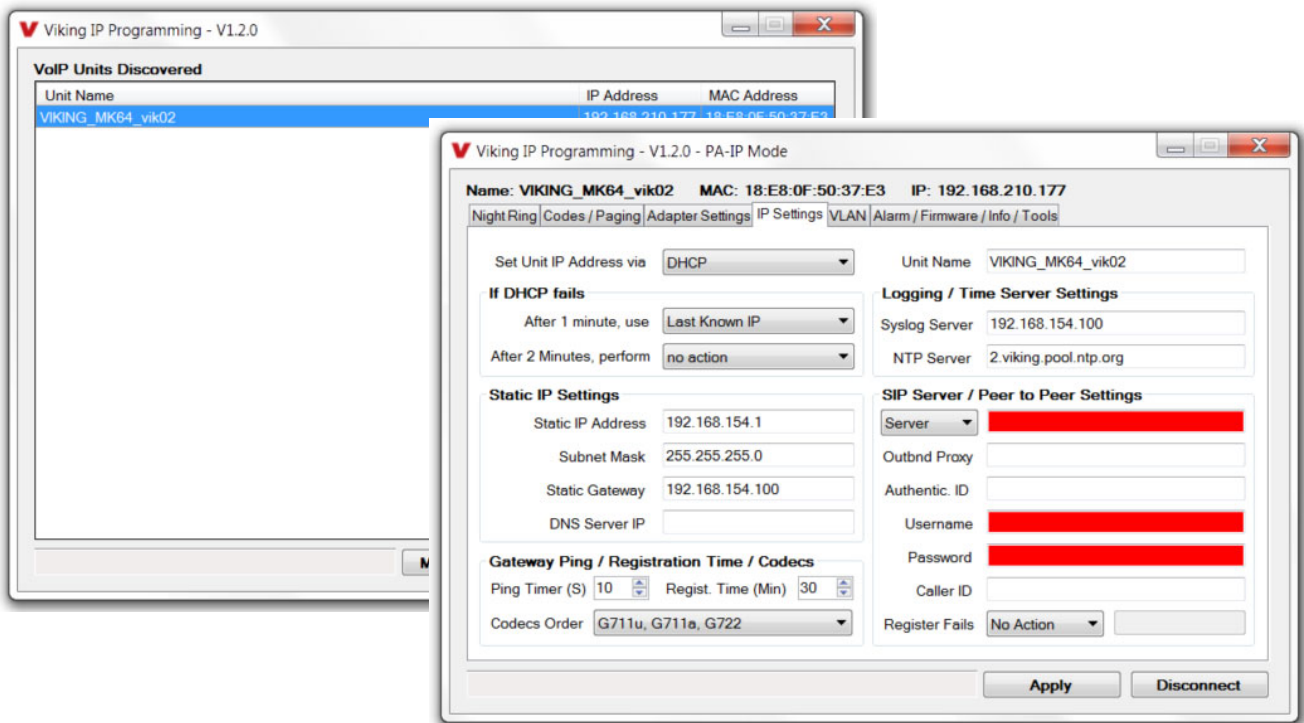
### Download and install the programming software

1. Go to [www.vikingelectronics.com](http://www.vikingelectronics.com) and enter **PA-IP** in the search box
2. Click **PA-IP** in the search results
3. Scroll down the page to Downloads, click **IP Programming Software**
4. Install the programming software by saving or opening the file and then clicking on **setup Viking IP Programming.exe**
5. Follow the prompts on your screen to complete software installation
6. To start the Viking IP Programming application, click on the Viking IP Programming icon on your desktop. The Main screen will appear, allowing the user to program any **PA-IP** connected to that LAN.

**Note:** PC must be connected to the same LAN as the **PA-IP**.

## A. Connect/Disconnect

Open the “Viking IP Programming” software on the PC and the start screen shown below will appear. Any Viking IP products that are connected to the network will appear on the list. Simply select the **PA-IP** on the list and click on the “Connect” button at the bottom or double click the selected unit. If no username and password have been programmed and the security code of the selected unit is still set to default (845464), the PC software will not require entering a username, password or security code to connect to the **PA-IP**. If the **PA-IP** has been programmed with a username and password, a pop up window will ask for the username followed by the password. If the unit’s security code has been changed from “845464”, it will then prompt for the correct security code. **PA-IP**’s have a default name of “uCMK64\_40TB-IP”, so if many **PA-IP**’s are connected to the same network and all have the default name, MAC addresses must be used to identify each **PA-IP**. When finished programming, click on the “Disconnect” button at the bottom. Closing the program will also automatically disconnect the unit.

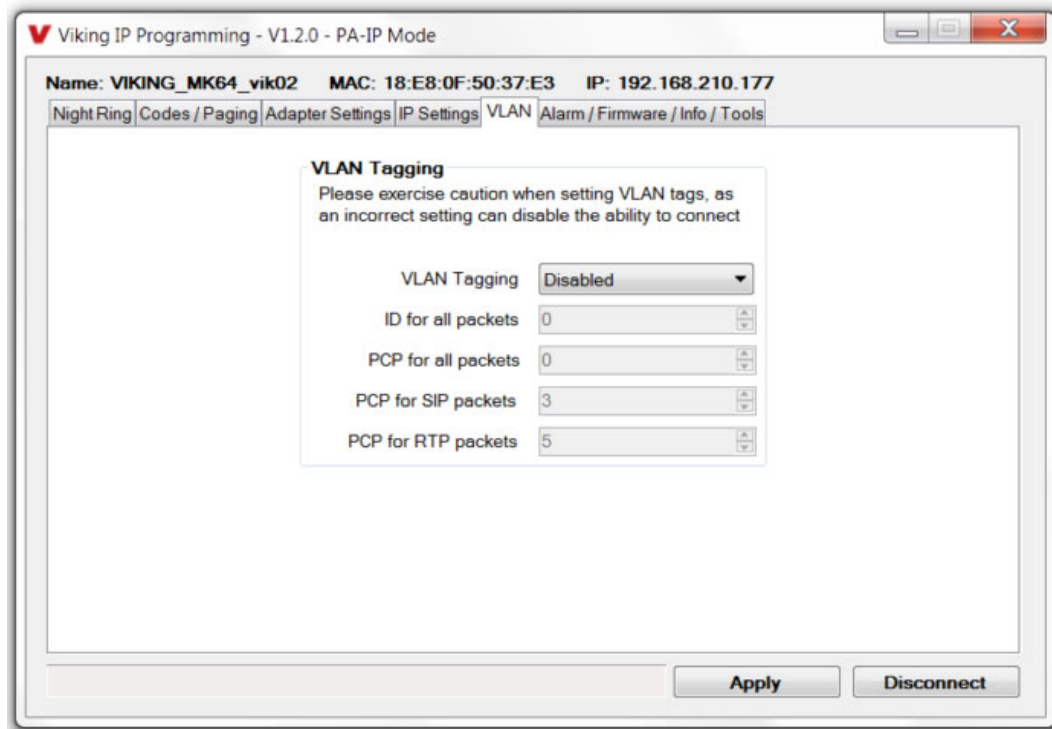


## B. Configuring the PA-IP Network Settings

|                |   |
|----------------|---|
| <b>Step 1.</b> | Open the “Viking IP Programming” software on a windows PC that is connected to the same LAN as the <b>PA-IP</b> speaker to be programmed.   |
| <b>Step 2.</b> | The window in the upper left corner of the menu will show you each <b>PA-IP</b> that is connected to that LAN. Select the unit with the same MAC address shown on the label located on the top of the Ethernet connector on the <b>PA-IP</b> or the matching label that can be found on the bottom of the Black Box.  |
| <b>Step 3.</b> | Click on the “connect” button. A default <b>PA-IP</b> has no username or password programmed, the security code is set to “845464” and when configured this way, you are instantly connected to the <b>PA-IP</b> . If the <b>PA-IP</b> has been programmed with a username and password, a pop up window will ask for the username followed by the password. If the unit’s security code has been changed from “845464”, it will then prompt for the correct security code, then click “retry”.                 |
| <b>Step 4.</b> | The program will then read and display the <b>PA-IP</b> ’s IP and programming settings.   |
| <b>Step 5.</b> | Click on the “IP Settings” tab.   |
| <b>Step 6.</b> | Select the appropriate value Static IP Settings or DHCP for “Set Unit IP Address via”. <b>Note:</b> Changing the IP address will cause you to have to reconnect to the unit. Enter the values for the fields in “if DHCP fails” or “Static IP Settings” as needed.  |
| <b>Step 7.</b> | Set the “Unit Name”, “Logging / Time Server Settings” as needed.  |
| <b>Step 8.</b> | Select Peer-Peer in the “SIP Server / Peer to Peer Settings” to use the unit in Peer to Peer mode or for Multicast paging only. Select Server to register with a SIP registrar server and fill in the “Outbnd Proxy” (SIP Outbound Proxy Server Address, “ip:port”), “Authentic. ID” (SIP Authentication ID), “Username” (SIP Username, <string>), “Password” (SIP Password), and “Caller ID” (SIP Caller ID) with values from your VoIP provider. Required fields will be red when the unit is not registered. |

## C. Configuring PA-IP VLAN Settings

|                |   |
|----------------|---|
| <b>Step 1.</b> | Click on the "VLAN" tab   |
| <b>Step 2.</b> | Disable or enable VLAN tagging by setting the value of "VLAN Tagging".  |
| <b>Step 3.</b> | Set the VLAN tag ID by selecting an integer (1 to 4094) in "ID for all packets".  |
| <b>Step 4.</b> | Set the Priority Code Point (PCP) value for all not SIP and RTP packets in the "PCP for all packets" input (0 is default, priorities are from low to high: 0, 1, 2, 3, 4, 5, 6, 7). Set the "PCP for SIP packets" (3 is default). Set the "PCP for RTP packets" (5 is default). |



## D. Manually Resetting the Security Code to Enter Programming

*Note: This procedure will not erase a username and password used to access the PA-IP program mode. Only the security code is set to default.*

|                |  |
|----------------|--|
| <b>Step 1.</b> | Power down the PA-IP by disconnecting the LAN Cable (RJ45 plug).   |
| <b>Step 2.</b> | Press and hold the Reset button, then reconnect the LAN Cable (RJ45 plug).   |
| <b>Step 3.</b> | Continue to hold the Reset button until you hear 2 beeps, (approximately 6 seconds). Then release the button. The Status LED will remain off for the first 3 seconds, flash slowly for 3 seconds then fast flash (after 2 beeps), indicating when to release button. |
| <b>Step 4.</b> | The security code is now reset to <b>845464</b> (factory default).   |
| <b>Step 5.</b> | You can now enter programming by following the steps in section A.   |

## E. Manually Resetting All Network Parameters to Factory Default

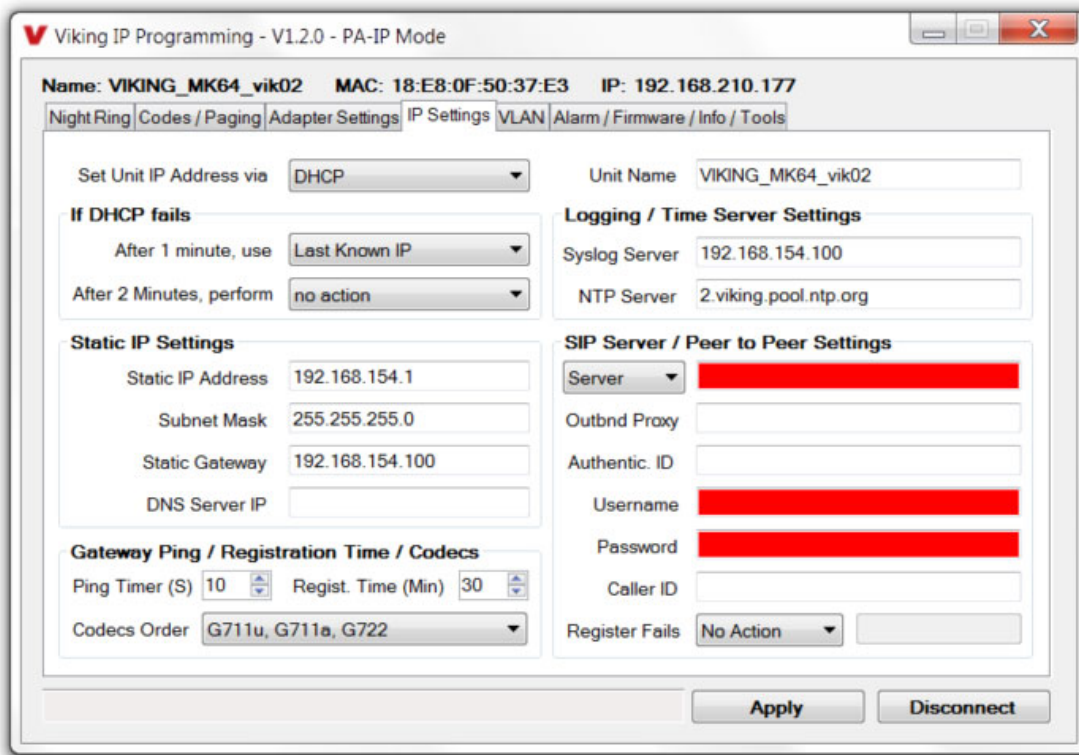
*Note: This procedure will erase a username and password that are used to access the PA-IP program mode.*

|                |  |
|----------------|--|
| <b>Step 1.</b> | Power down the PA-IP by disconnecting the LAN Cable (RJ45 plug).   |
| <b>Step 2.</b> | Press and hold the Reset button, then reconnect the LAN Cable (RJ45 plug).   |
| <b>Step 3.</b> | Continue to hold the Reset button until you hear 2 beeps, (approximately 6 seconds). Continue to hold Reset button until you hear 4 more beeps, (approximately 6 seconds later), then release the button. The Status LED will remain off for the first 3 seconds, flash slowly for 3 seconds (2 beeps), fast flash for 6 seconds (4 beeps), then light steady indicating when to release button. |
| <b>Step 4.</b> | You can now enter programming by following the steps in section A.   |

## Programming Features Index

| DESCRIPTION  | Section | Page |
|--|---------|------|
| Connect/Disconnect   | A       | 6    |
| VLAN Settings  | C       | 7    |
| Unit Name  | 1       | 9    |
| SIP Server   | 2       | 9    |
| Peer to Peer Settings  | 3       | 9    |
| Outbound Proxy   | 4       | 9    |
| Authentication ID  | 5       | 9    |
| Register Fails (Re-Resolve or Alternate Server)  | 6       | 9    |
| Security code (factory set to 845464)  | 7       | 10   |
| Access Code (1 - 6 digits, blank = disabled, factory set to 123456)  | 8       | 10   |
| SIP Page Priority over Multicast Page  | 9       | 10   |
| Multicast Paging   | 10      | 11   |
| Multicast Paging Volume (0 - 19, factory set to 1)   | 11      | 11   |
| Internal / External Relay (factory set to internal)  | 12      | 11   |
| Relay Mode (Door Strike, Paging, Alarm, Ring, Ring Flash, factory set to Door Strike) <b>NOTE: Normally closed modes can also be programmed.</b> | 13      | 12   |
| Relay Activation Command (1 or 2 digits, factory set to **) <b>NOTE: Relay Mode must be set to Door Strike</b>                                   | 14      | 12   |
| Relay Activation Time (0.5 - 99 seconds, factory set to 5 seconds)   | 15      | 12   |
| Relay Buzz Volume (1 - 3 or Disabled, factory set to 3)  | 16      | 12   |
| Relay Latch Commands (Enabled or Disabled, factory set to Enabled) <b>NOTE: Relay Mode must be set to Door Strike</b>                            | 17      | 12   |
| SIP Paging Volume (0 - 19, factory set to 1)   | 18      | 12   |
| Ring Volume (0 - 19, factory set to 5)   | 19      | 12   |
| SIP Page Length Time Out (disabled or 1 - 9 minutes, factory set to 3 minutes)   | 20      | 12   |
| Multicast Page Length Time Out (1 to 255 seconds or Disabled, factory set to 180 seconds)  | 21      | 13   |
| Inbound Call Mode (Disabled, Auto Answer, Auto Answer-Secure or Ring, factory set to Auto Answer)  | 22      | 13   |
| Ring Cadence (factory set to Normal, 2 seconds on 4 seconds off)   | 23      | 13   |
| LED Mode (OFF, ON or Paging, factory set to Paging)  | 24      | 13   |
| Line Out Control   | 25      | 13   |
| DTMF Regeneration  | 26      | 13   |
| Pre Page Tone  | 27      | 13   |
| Mute Current / Next Alarm  | 28      | 14   |
| Permanent Alarm Mute   | 29      | 14   |
| Programming User name and Password   | 30      | 14   |
| IP Firmware  | 31      | 14   |
| Unit Firmware  | 32      | 14   |
| Import/Export  | 33      | 15   |
| Clear Adapter Settings   | 34      | 15   |
| Clear IP Settings  | 35      | 15   |
| Diagnostics  | 36      | 15   |
| Night Ring Timed Operation   | 37      | 15   |
| Time Zone Settings/daylight Saving Time  | 38      | 15   |





## Programming Features

### 1. Unit Name

Up to a 31 character unit name can be assigned to the **PA-IP** being programmed.

### 2. SIP Server

Enter the IP address or URL of your SIP server or service provider in this field. The SIP server IP address is limited to 74 characters. **Note:** *If an alternate SIP server IP address is programmed, the IP address for the SIP server and alternate SIP server will be limited to 31 characters.* **Note:** *If outbound proxy is not required, enter the SIP server IP address into the Outbnd Proxy field.*

### 3. Peer to Peer Settings

When set to Peer to Peer mode a SIP server is not used. The unit should be programmed with a Static IP Address and Username, a password is not used. Caller ID can be programmed if needed. Simply call the unit by entering the programmed "username@192.168...(Static IP address for the unit)". The static IP address is normally programmed into a page button on the VoIP telephones. **Note:** *Peer to Peer mode does not affect Multicast paging.*

### 4. Outbound Proxy

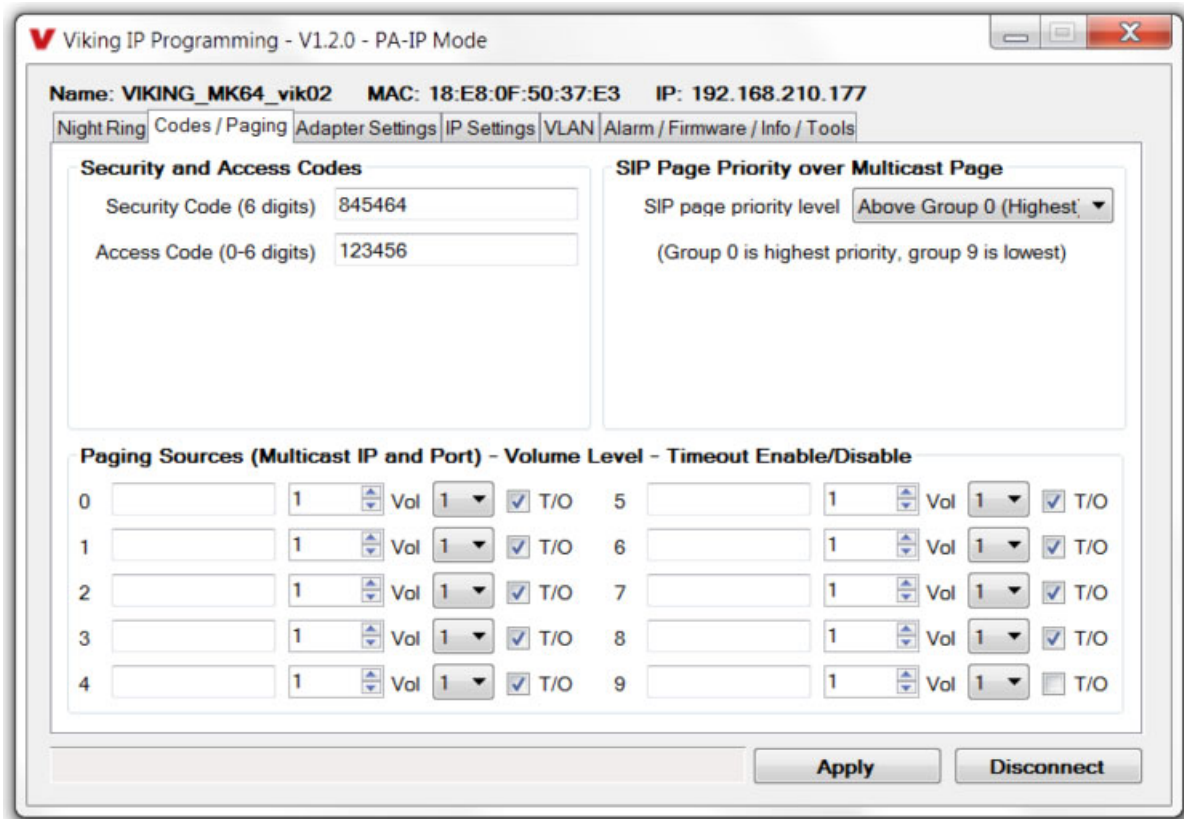
If your SIP provider requires an outbound proxy IP address enter it in the "Outbnd Proxy" field. **Note:** If Outbound Proxy is not required, leave this field blank.

### 5. Authentication ID

If your SIP provider requires Authentication ID, enter it in the Authentic. ID field. If Authentication ID is not required, leave this field blank.

### 6. Register Fails (Re-Resolve or Alternate Server)

When registered to a SIP server in the event that registration is lost you can program the unit to re-resolve using the current SIP server IP address or route pages through an alternate SIP server. With Alternate Server selected enter the IP address of the alternate SIP server in the field next to the Register Fails drop down box. **Note:** *With an alternate SIP server IP address programmed, the IP address for the SIP server and alternate SIP server will be limited to 31 characters.*



## 7. Security Code

The security code allows the user/installer to program the **PA-IP** with a PC and the required 'Viking IP Programming' software. If the security code is left as default, the PC software won't require entering a security code when connecting to the **PA-IP**. It is recommended that the factory set security code be changed. The security code can be set back to default by holding the Reset button while the **PA-IP** powers up. See section D on page 7 for details. It can also be defaulted by connecting to the unit with the IP Programming Software and clicking on the "Clear Adapter Settings" button on the "Alarm / Firmware" tab. **Factory Setting:** 845464

**Note:** The security code must be 6 digits and cannot include a \* or #.

## 8. Access Code

The Access Code is primarily used along with the "Auto Answer Secure" Inbound Call Mode to force inbound SIP page callers to dial the Access Code before they can make a SIP page. The Access Code also comes into play when using the relay of the **PA-IP** to open a door or gate. When you call the **PA-IP** and the unit automatically answers the call (see Programming section 22), you must dial the Access Code before you are allowed to operate the door strike relays, as extra security on inbound calls. Once a tenant has entered the correct Access Code, 2 beeps are heard and the user can now enter any "Operation Commands" (see Operation section C). The Access Code can be disabled if this basic security is not required. **Factory Setting:** 123456

**Note:** The Access Code can be 1 - 6 digits in length and cannot include a \* or # or match the numbers used for the Security Code.

## 9. SIP Page Priority over Multicast Page

Incoming **PA-IP** SIP call audio streams can be programmed to have priority over any of the 10 Multicast paging groups. Simply Use the "Sip Page Priority Level" drop down menu to select which Multicast group you want SIP calls to have priority over. **Factory Setting:** 0 (highest priority)

## 10. Multicast Paging

The **PA-IP** is designed and tested to be compatible with FreeSwitch Multicast Paging. Up to 10 multicast paging groups can be programmed into each **PA-IP** page adapter. Each multicast group is defined by a multicast address and port number. Each multicast group is assigned a priority, allowing simultaneously arriving pages to be serviced based on importance. A timeout check box can be selected for each paging group. See Multicast Page Length Time Out under Speaker Settings to adjust the timeout from 1 to 255 seconds. Only one timeout time can be programmed for all Multicast groups. By default groups 0-8 have the timeout enabled, group 9's timeout is disabled. This is useful for background music.

### Assigning Priority

The **PA-IP** will prioritize simultaneous Multicast audio streams according to their priority in the Paging Sources list. Group 0 will have the highest priority while group 9 will have the lowest priority. Group 9 is useful for a low priority stream such as background music. Group 0 is useful for high priority streams such as emergency messages.

The multicast paging groups can also be used for up to ten different paging zones for receiving audio streams. A paging zone can consist of one or many **PA-IP** multicast page adapters. There is no limit to how many page adapters can be in a given paging zone. Each multicast group is defined by a multicast address and port number. Each multicast group is assigned a priority, allowing simultaneously arriving pages to be serviced based on importance.

## 11. Multicast Paging Volume

The volume of each individual multicast page can be adjusted from 0 - 19. **Factory Setting:** 1

Viking IP Programming - V1.2.0 - PA-IP Mode

Name: VIKING\_MK64\_vik02 MAC: 18:E8:0F:50:37:E3 IP: 192.168.210.177

Night Ring Codes / Paging Adapter Settings IP Settings VLAN Alarm / Firmware / Info / Tools

|                           |             |                                |             |
|---------------------------|-------------|--------------------------------|-------------|
| Internal / External Relay | Internal    | SIP Paging Volume              | 1           |
| Relay Mode                | Door Strike | Ring Volume                    | 5           |
| Relay Activation Command  | **          | SIP Page Length Timeout        | 3 min       |
| Relay Activation Time     | 5 sec       | Multicast Page Length Time Out | 180 sec     |
| Relay Buzz Volume         | 3           | Inbound Call Mode              | Auto Answer |
| Relay Latch Commands      | Enabled     | Ring Cadence                   | Normal Ring |
|                           |             | LED Mode                       | Paging      |
|                           |             | Line Out Control               | Enabled     |
|                           |             | DTMF Regeneration              | Disabled    |
|                           |             | Pre Page Tone                  | Enabled     |

Apply Disconnect

## 12. Relay Internal / External

With the relay set to "Internal" the **PA-IP** will activate its on board relay for amplifier signaling, door strike, gate control, etc. The Relay must be set to "External" when using a Viking remote model **RC-4A** relay controller to activate external relays instead. **Factory Setting:** Internal

### 13. Relay Mode

**Door Strike Mode (Factory Setting):** When programmed for Door Strike Mode the relay is intended for door strike, maglock or gate control. Select NC Door Strike Mode to provide normally closed contacts.

**Paging Mode:** When programmed for Paging the relay will activate whenever a page is active. This mode is useful for triggering an external Amp. Select NC Paging Mode to provide normally closed contacts.

**Alarm Mode:** When programmed in Alarm Mode the relay will activate continuously while the unit is powered and registered to the SIP server. In the event the unit loses power and/or SIP registration the relay will turn off, which can be used to signal an alarm device. **Note:** *Alarm mode cannot be used with external relay control (RC-4A).* Select NC Alarm Mode to provide normally closed contacts.

**Ring Mode:** When programmed for Ring Mode the relay will continuously activate while the **PA-IP's** extension is called and the **PA-IP** is set to loud ring (see Programming sections 22 and 37). This mode is useful for activating a Viking model **SL-2** strobe light, etc. Select NC Ring Mode to provide normally closed contacts.

**Ring Flash Mode:** When programmed for Ring Flash Mode the relay will momentarily turn on and off in a 400ms on/off cadence while the **PA-IP's** extension is called and the **PA-IP** is set to loud ring (see Programming sections 22 and 37). This mode is useful for activating a Viking **LPL-1** Remote Visual Indicator, etc. Select NC Ring Flash Mode to provide normally closed contacts.

### 14. Relay Activation Command (Relay Mode must be set to “Door Strike”)

The one or two digit code stored in the Relay Activation Command is the touch tone command that the person calling the **PA-IP** must enter on their phone in order to momentarily activate the relay. The code can contain the characters 0 - 9, # or \*. The code cannot match a relay latching command. The code must be entered while the remote phone is communicating with the **PA-IP**. If an access code is set it will need to be entered first. This can be disabled by leaving the access code blank. **Factory Setting:** \*\*

### 15. Relay Activation Time (Relay Mode must be set to “Door Strike”)

The value stored in the Relay Activation Time is the amount of time the relay will be energized after a correct momentary touch tone command is entered. This number can range from 0.5 to 99 seconds. **Factory Setting:** 5 seconds

### 16. Relay Buzz Volume (Relay Mode must be set to “Door Strike”)

The relay activation tone is a buzzing sound that is heard over the audio outputs when the door strike relay is activated. After the calling party enters the correct relay activation command, the calling party and audio outputs will hear 2 short confirmation beeps followed by a buzzing sound (relay activation tone) while the door strike relay is activated. The tone (buzz) length will match the relay activation time up to a maximum of 5 seconds. The tone (buzz) can be programmed to three different volume settings 1 = Low, 2 = Medium, 3 = High or it can be disabled. When set to “Disabled” the confirmation beeps will not be heard. **Factory Setting:** 3

### 17. Relay Latch Commands (Relay Mode must be set to “Door Strike”)

When set to “Enabled” the Operation Commands (\*0 to \*1) to Un-Latch or Latch the relay are enabled.

When set to “Disabled” the Operation Commands (\*0 to \*1) to Un-Latch or Latch the relay are disabled. Disabling the Latch commands can be useful in applications where you want to eliminate the possibility of inadvertently entering a latch command leaving a gate open/closed, etc. Note: The momentary relay command is still allowed.

**Factory Setting:** Enabled

### 18. SIP Paging Volume

The SIP Paging volume can be set from 0 - 19. 0 = lowest volume setting, 19= highest volume setting. Adjusting this will set the volume level for SIP Paging. **Factory Setting:** 1

### 19. Ring Volume

When the Inbound Call Mode (see Programming section 22) is set to Ring, the **PA-IP** will output a loud ring when it is called. The volume level of the loud ring can be adjusted from 0 - 19. **Factory Setting:** 5

### 20. SIP Page Length Timeout

This feature selects the maximum length of time that incoming SIP calls can be connected. Programmable in increments of 1 minute up to a maximum of 9 minutes or disabled. With the call length disabled, the **PA-IP** must rely on a call ended signal or Touch tone # to hang-up. **Factory Setting:** 3 minutes

## 21. Multicast Page Length Timeout

The Multicast Page Length Timeout can be programmed from 1 to 255 seconds in one second increments. The Time Out can also be disabled, allowing any length of Multicast page or continuous background music. The multicast timeout can be individually enabled or disabled for each multicast page group using a checkbox provided for each paging source (on the “Codes / Paging” tab). The same timeout time applies to all multicast page groups that have the multicast timeout enabled. **Factory Setting:** 180 seconds.

## 22. Inbound Call Mode

The Inbound Call Mode determines how the **PA-IP** handles incoming SIP calls. One option is to generate a loud ring sound. The **PA-IP** can also auto answer the call, to allow SIP paging or remote control of the relay. The “secure” option for auto answer require the callers to dial the access code in order to transmit a page. **Factory Setting:** Auto Answer

**Disabled** – Inbound SIP calls are not allowed.

**Auto Answer** – Inbound SIP calls are auto answered on the first ring and can page over the audio outputs.

**Auto Answer Secure** – Inbound SIP calls are auto answered and the caller must dial the access code in order to make a page.

**Ring:** In the “Ring” mode the unit will not automatically answer an incoming SIP call but will output a loud ring signal in a factory programmed 2 seconds on, 4 seconds off ring pattern (pattern / cadence is selectable).

## 23. Ring Cadence

When the **PA-IP** is set to loud ring on incoming SIP calls, you can select the ring cadence of the loud ring sound. It can be programmed to one of four different cadences. **Factory Setting:** Normal Ring

**Normal Ring** (single ring: 2 seconds ON, 4 seconds OFF) factory setting

**Double Ring** (double ring: 1 second ON, 0.5 second OFF, 1 second ON, 3.5 seconds OFF)

**Short-Short-Long** (triple ring: 0.5 second ON, 0.5 second OFF, 0.5 second ON, 0.5 second OFF, 1 second ON, 3 seconds OFF)

**Short-Long-Short** (triple ring: 0.5 second ON, 0.5 second OFF, 1 second ON, 0.5 second OFF, 0.5 second ON, 3 seconds OFF)

## 24. LED Mode

The “Page / Status” LED on the **PA-IP** can be programmed to one of three different modes.

**Factory Setting:** Paging Mode

**OFF Mode:** In this mode the LED will not light during normal operation. It will only light (blink) if it cannot register with the programmed SIP server or while manually resetting all network parameters to factory default.

**On Mode:** The LED will remain ON when the unit is powered and registered. The LED will flash if registration is lost and alarm is active.

**Paging Mode:** The LED will remain OFF in the idle state, light steady when the page is active, then turn OFF when the call is completed. The LED will also light steady during Multicast paging.

## 25. Line Out Control

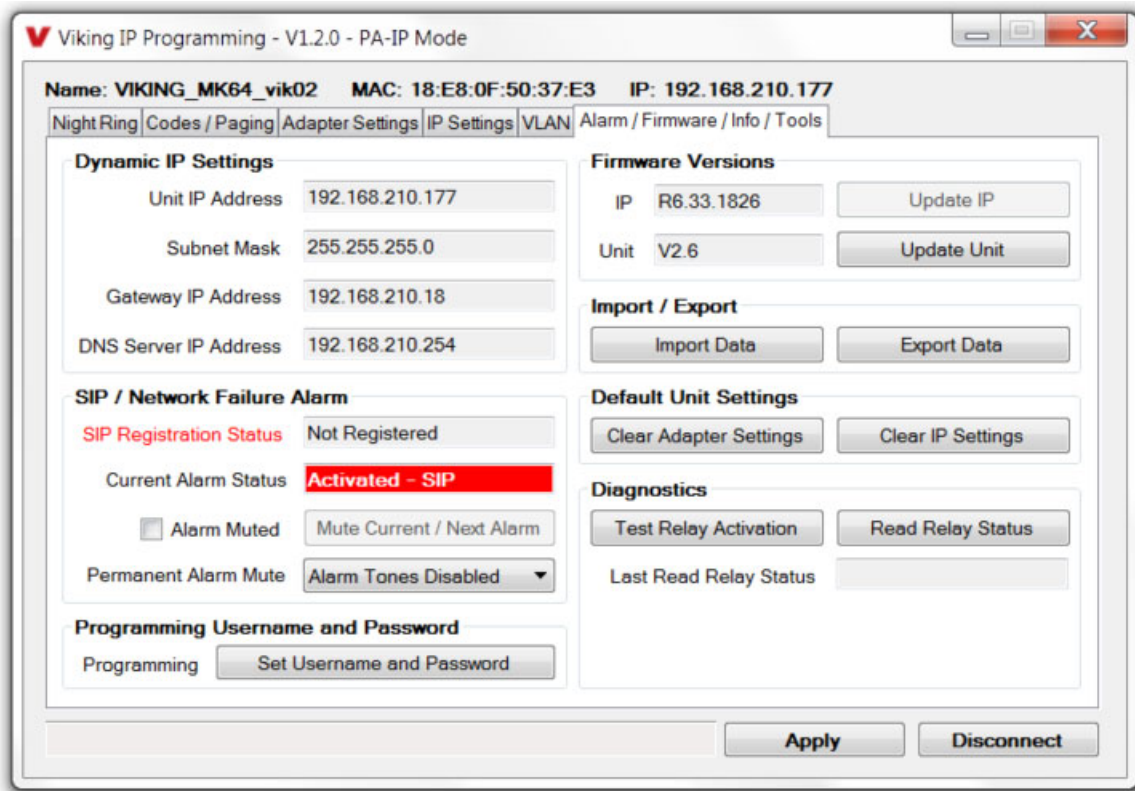
When Line Out Control is set to enabled, SIP page audio will be heard from the Line Level Output. When this feature is disabled, the Line Level Output is muted during SIP page calls. The Line Level Output still receives multicast audio and the speaker output still receives SIP page audio when the Line Out control is disabled. **Factory Setting:** Enabled

## 26. DTMF Regeneration

When DTMF Regeneration is Enabled, any touch tones entered by the caller (in band or out of band) will be passed along to the line out and speaker out. These tones are used by a zone controller or external amplifier to choose which zone to send the page audio to. **Factory Setting:** Disabled

## 27. Pre Page Tone

When enabled, a short beep will be heard prior to SIP or Multicast paging audio. The volume of the Pre Page Alert Tone will match the volume setting of the SIP or Multicast page. **Factory Setting:** Enabled



## 28. Mute Current / Next Alarm

A network failure alarm will be indicated by providing 3 beeps over both audio outputs every 30 seconds but only when Permanent Alarm Mute is set to Alarm Tones Enabled (Permanent Alarm Mute is set to Alarm Tones Disabled by default). A network failure indicates the unit is not registered to the SIP server or there is a communication failure with the gateway. The three beeps can be muted by clicking on “Mute Current / Next Alarm” button in the IP Programming software or pressing and holding the Reset button for five seconds. The Status LED will continue to flash to assist troubleshooting. The alarm beeps can also be permanently disabled. See Permanent Alarm Mute below. **Factory Setting:** Disabled

## 29. Permanent Alarm Mute

Permanent Alarm Mute is set to Alarm Tones Disabled by default, so network failure alarms will not be indicated over the audio outputs. Only the status LED will flash to indicate the network failure. To enable alarm tones over the audio outputs, select Alarm Tones Enabled.

## 30. Programming a Username and Password to Restrict Access to Programming

To increase security, a username and password can be programmed to limit access to the **PA-IP** using Viking IP Programming software. When no username and password are programmed and the security code is still set to default (845464), the PC software will not require a username, password or security code when connecting to the **PA-IP**. If the **PA-IP** has been programmed with a username and password, a pop up window will ask for the username followed by the password. If the unit's security code has been changed from default (845464), it will then prompt for the correct security code.

If the username and password are unknown, they can only be erased by resetting all network parameters to default with the Reset button (see section E on page 7). If the username and password are known but you wish to erase them, that can be accomplished by exporting the data from the **PA-IP**, resetting all network parameters to default with the Reset button (see section E on page 7) or clicking on “Clear IP Settings” and then importing the data back into the **PA-IP**.

## 31. IP Firmware

Update IP is currently not available. The ability to update IP firmware will be made available in a later release of Viking IP Programming software. If an IP firmware update is needed, Viking Technical Support will assist in updating the IP firmware.

## 32. Unit Firmware

If new Unit firmware is available, after opening the programming software a pop up window will ask if you would like to update the firmware. Another way to update is accomplished by clicking the “Update Unit” button. You can then browse to the folder that contains the HEX file for updating the unit's firmware. This method is typically only used when Viking Technical Support has sent you updated firmware.

### 33. Import / Export

The Import/Export feature is useful for backing up all the **PA-IP**'s programming or for importing programming when installing multiple units with a majority of the same programming.

### 34. Clear Adapter Settings

Clicking on the "Clear Speaker Settings" button in programming will reset all of the programming features back to their factory default settings, including setting the unit's security code back to the default value (845464).

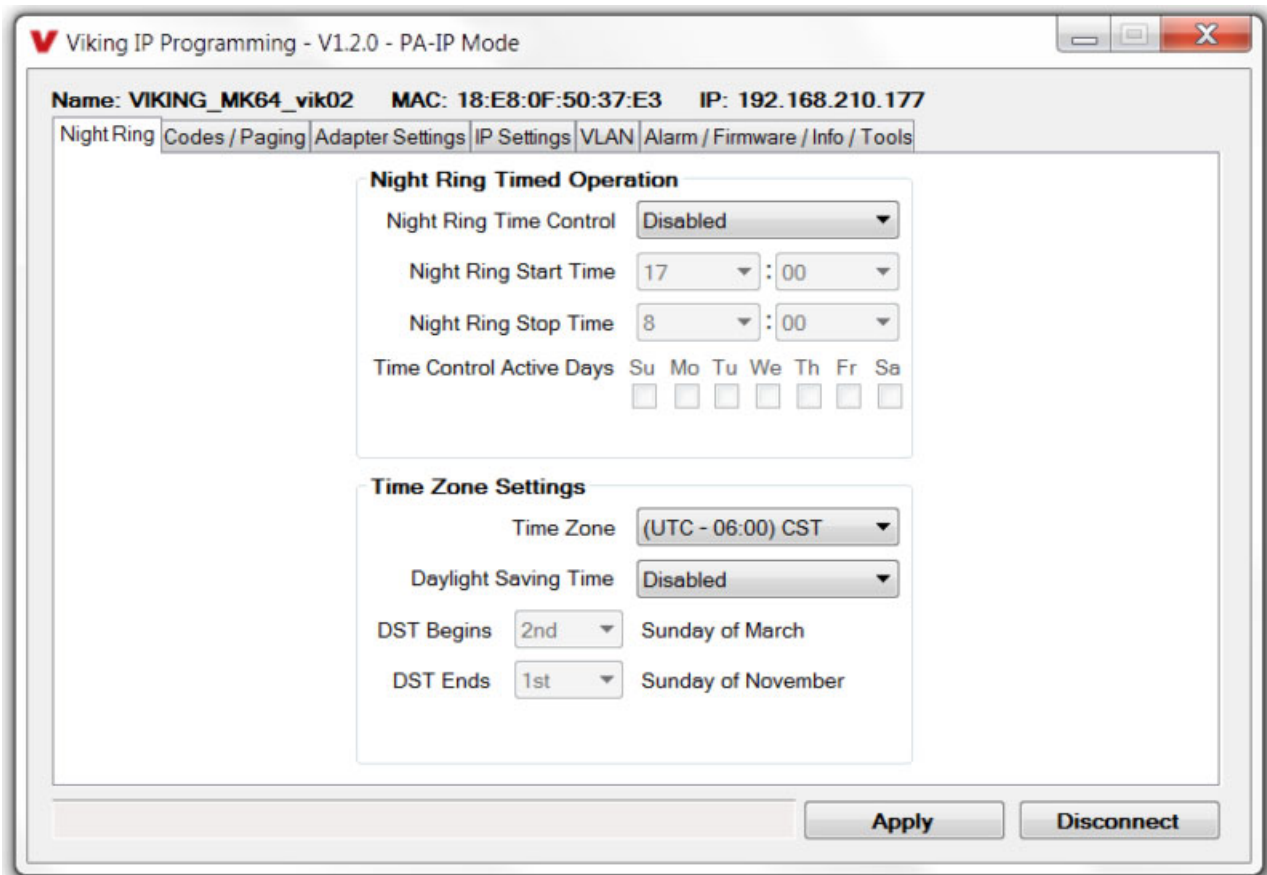
**Note:** This command will not change or reset your IP settings or Multicast paging settings.

### 35. Clear IP Settings

Clicking on the "Clear IP Settings" will reset all of the IP settings back to their factory default settings. This also clears Multicast IP address / port settings and erases any username and password programmed in the unit to restrict access to programming.

### 36. Diagnostics

The Diagnostics section in the Viking IP Programming can be used to test the functionality of the relay. **Note:** This will not work when relay mode is set to external or Alarm.



### 37. Night Ring Timed Operation

When Night Ring Timed Operation is enabled, if a SIP call is received during the programmed Start and Stop times, the **PA-IP** will output loud ring on the "Line Out" and "Speaker Out" terminals. This is selectable for each day of the week. When outside of the Night Ring timing window, the Inbound Call Mode setting will determine how SIP calls are handled. Night ringing can also be enabled by providing a contact closure to the trigger input on the **PA-IP**. When this input is shorted, all calls will cause loud ringing. **Note:** For timed Night Ringing the unit must be synced with a time server. If the Night Ringing feature is enabled in the software you will be asked to use Viking's Time Server when changes are applied. The address will be entered by the software automatically.

### 38. Time Zone Settings

When using the Night Ring Timed Operation, the **PA-IP** must be synced with the network time. Set the Time Zone Settings to match the settings on the network the unit is connected to for proper timed operation.

## A. Inbound SIP Calls

How inbound SIP calls are handled depends on the Inbound Call Mode selected (see Programming section 22), the current programming for Night Ring Timed Operation if enabled (see Programming section 37), the current time of day and day of week. If Night Ring Timed Operation is disabled and the Inbound Call Mode is set to Auto Answer, the **PA-IP** will automatically answer inbound calls, provides a Pre Page Alert Tone if enabled and allows paging. When the Inbound Call Mode is set to Auto Answer – Secure, the **PA-IP** auto answers inbound calls but the party must dial the Access Code before they are allowed to page. The Inbound Call Mode also has a Ring option that allows the unit to output a loud ring on any inbound SIP calls and the volume of the ring is adjustable (see Programming section 19). The Night Ring feature can also be enabled by providing a contact closure across the trigger input screw terminals. If Night Ring Timed Operation is enabled and an inbound SIP call is received between the programmed start and stop times and the current day is a programmed active day, the unit will automatically output a loud ring instead of following the Inbound Call Mode programming. This allows for loud ring at certain times of the day/days of the week and paging all other times/days of the week.

## B. Multicast

The **PA-IP** is compatible with FreeSwitch Multicast paging (see Programming section 10). Up to 10 multicast paging groups can be programmed into each unit and each group is assigned a priority level allowing simultaneous arriving multicast pages to be handled based on importance. Low priority groups are often used for low priority streams like background music and high priority groups are used for high priority streams such as emergency messages. Additionally a timeout limit can be set and either enabled or disabled for each multicast group. The volume of each group can be programmed and SIP calls can be assigned either higher or lower priority than all or some of the multicast groups (see Programming section 9).

## C. Operation Commands (Relay Mode must be set to “Door Strike”)

The following commands can be entered after an inbound SIP call to the **PA-IP**, when the Inbound Call Mode is set to auto answer. After the unit auto answers the call, one beep will be heard if Pre Page Alert Tone is enabled. If the Access Code has been disabled, you can now enter the Operation Commands listed below. If an Access Code has been programmed, enter the Access Code digits. Once the correct code has been entered, two beeps will be heard and you can now enter the Operation Commands listed below.

| Feature        | Tone Tone Command | Description   |
|----------------|-------------------|---|
| Activate Relay | ** or<br>__ __    | Momentarily activate relay (1 or 2 digits, factory set to **).  |
| Un-Latch Relay | *0                | Un-latch* (deactivate) the relay.                               |
| Latch Relay    | *1                | Latch* (continuously activate) the relay.                       |
| Disconnect     | #                 | Disconnects or forces the <b>PA-IP</b> page adapter to hang up. |

\* **Note:** Latching commands must be enabled in programming.



## Troubleshooting

If the unit cannot register with the programmed SIP server, the Status LED will blink on and off every second until communication is restored. This alerts a potential user of a problem with the device that will prevent a page from being made.

## Related Products

### Viking IP Speakers

The Viking model **40TB-IP** Talk-Back Ceiling/Wall Speaker enables two-way conversations via SIP and also allows for standard paging and background music via multicast. The Talk-Back Speaker easily connects with a single CAT5/6 cable from your PoE switch. Its shallow depth allows the speaker to be conveniently mounted in a standard 2" x 4" stud wall or ceiling.

An auxiliary switch input allows a hard wired wall button to initiate a SIP call. Alternately, an optional wireless Bluetooth remote call button can be used (Viking model **BTR-3**, sold separately). A momentary button press will initiate a standard call, and holding the button for 3 or more seconds will initiate an emergency call. The remote can also be used to adjust the speaker volume. The LED on the **40TB-IP** can be programmed to blink when there is call activity.

The integrated microphone enables talk-back and also monitors room noise to automatically increase speaker volume when necessary. Line-level audio output connections are provided for connecting to an external amplifier. Speaker output connections are also provided to directly drive additional analog speakers. A programmable relay output is provided for activating door locks, strobe lights, external amplifiers, etc. For more info, see **DOD 502**.



**40TB-IP**

**40-IP**



The Viking model **40-IP** Ceiling/Wall Speaker enables SIP endpoint paging and also allows for standard paging and background music via multicast. The speaker easily connects with a single CAT5/6 cable from your PoE switch. Its shallow depth allows the speaker to be conveniently mounted in a standard 2" x 4" stud wall or ceiling.

Line-level audio output connections are provided for connecting to an external amplifier. Speaker output connections are also provided to directly drive additional analog speakers. The LED on the **40-IP** can be programmed to light during paging. For more info, see **DOD 503**.

## Viking Analog Speakers

The **25AE**, **30AE**, **35AE**, and **40AE** paging speakers provide additional economical paging coverage to existing Viking paging units (**40-IP**, **PA-2A**, **PA-15**, **PA-30**, **PA-60**, **HF-3W**, **M2W**) or to any system with an 8 Ohm output.

In outdoor, factory or warehouse environments, **25AE** paging horns are the best method of producing understandable sound. In these environments the directional design allows the installer to focus the sound cone down aisles and toward work areas.

In office and restaurant environments, it is best to distribute sound more evenly. Ceiling mounted **30AE**, **35AE**, or **40AE** speakers in close proximity offer the best distribution and are cost effective. The **35AE** speakers include a volume control.



**Models: 30AE**

**35AE**

**40AE**

**25AE**

**300AE**

### 30AE/35AE Ceiling Speakers

- Metal white grill for flush mounting in office ceilings
- Mounting hardware included
- Excellent frequency response
- The **35AE** includes a volume control

### 40AE Ceiling Speakers

- Attractive with a modern look
- Flush mounts into a 9.5" to 10" diameter hole
- Integral mounting system
- Excellent sound quality

### 25AE Paging Horn

- Adjustable base for easy mounting and directional adjustment
- Compact design for discreet mounting

### 300AE Paging Horn

- 30 Watt 8 Ohm / 70V Paging Horn

## Control Relay Contacts Across a Local Area Network

The **RC-4A** Network Enabled Relay Controller provides networked control of four relays via an easy-to-use web interface. The same interface can be used to check the status of four contact closure inputs. Relays can be toggled on or off, or user-programmed timed closures can be activated.

The **RC-4A** can be configured to work as a remote relay for Viking VoIP series entry phones, controlling door strikes and gates when a remote relay is required for security reasons. It can also be programmed to send an email or text message in response to a change in one or more of the sensor inputs. Two **RC-4A**'s can be set up so that activity on a sensor input of one unit will automatically send a message across the network to activate one of the relays on the other unit. Two levels of user access permit selected users to have full operational and programming rights while others have operational control but not programming capability. For more info, see **DOD# 582**



## Tile Bridge for Ceiling Speakers



The **SA-TBA** is a tile bridge designed to mount 8 inch loud speaker and bridges both 2 ft x 2 ft and 2 ft x 4 ft ceiling tiles. It is compatible with the Viking models **SA-1S**, **30AE**, **35AE**, and **40AE** speakers. The **SA-TBA** tile bridge is constructed of 24 gauge cold rolled steel with an electro galvanized rust-resistant finish.

## Related Products

### **Add Paging, Loud Ringing and Background Music to Centrex, PABX, IP, or Key Systems**

The **PA-15** interfaces with virtually any telephone system to provide 15 Watts of paging power - enough to drive fifteen 8-Ohm paging horns or speakers. This small and light weight chassis design is possible by utilizing new amplifier technology that is 300% less inefficient than old designs competitors use. High efficiency means much less heat disipation, smaller size, higher reliability, and lower cost.

The **PA-15** provides 36V talk battery for interfacing with an **FXO** or unused analog line input/trunk port. With the flip of a switch, the unit can connect to a **FXS** or PABX/Centrex station ring trip port or connect to a 600 Ohm paging port. When interfacing with systems that do not provide a paging contact closure, the built-in voice activation (**VOX**) is in control.

After paging, the **PA-15** auto disconnects on CPC, busy signal, silence, or default disconnect timer (helps prevent accidental paging system lock-up if phone is hung-up incorrectly). The unit will generate adjustable loud ringing from an independent ringing analog **FXS**/PABX/Centrex station or from a dry contact closure. The **PA-15** can provide background music (muted during page) if connected to an external music source.



### **Add Paging and Loud Ringing with Background Music to Any Phone System**

The **PA-30** can directly drive up to thirty (30) 8 Ohm paging speakers or fifty (50) 70 volt or 25 volt paging speakers. This small and light weight chassis design is possible by utilizing new amplifier technology that is 300% less inefficient than old designs competitors use. High efficiency means much less heat disipation, smaller size, higher reliability, and lower cost.

The **PA-30** provides loud ringing and paging to electronic key systems, 1A2 Key systems, PABX's as well as No-KSU phones and multi-line phones.

Paging is accomplished by connecting the **PA-30** to a paging port or unused telephone line input (trunk port) of nearly any phone system.

The **PA-30** will also generate adjustable loud ringing from a ringing analog line or from a dry contact closure. Either a loud electronic warble, or one of three other soft chime sounds may be selected. An external "night transfer" switch can be added to turn loud ringing on or off in night bell applications.

The **PA-30** eliminates the installation of multiple bells, relays and paging cards. The unit comes complete with a power supply, and integrated 30 Watt amplifier.



### **60 Watt Compact Two Zone Amplifier to Drive up to 60 Paging Speakers**

The **PA-60** can directly drive up to sixty (60) 8 Ohm paging speakers or one hundred (100) 70 volt or 25 volt paging speakers. Both channels can be fed the same input so the **PA-60** can be used as a single large amplifier, or each channel can be fed different inputs so the **PA-60** can be used as a two zone amplifier.

This small and lightweight chassis design is possible by utilizing new amplifier technology that is 300% less inefficient than old designs competitors use. High efficiency means much less heat disipation, smaller size, higher reliability, and lower cost.

Since each input has its own gain adjustment, one zone can be turned up louder for warehouse paging horn speakers, and the other zone can be turned down for office ceiling speakers. Two zones can also be helpful for installations in which one group of speakers is connected to a source that provides background music using the Viking **PI-1A** Paging Interface unit, and the other zone provides only paging.

The Viking models **CTG-1A** or **CTG-2A** can be used to add clock controlled tones with paging to both zones, or one zone can have just paging and be free of the time scheduled alert tones. The same can be done with the Viking model **MTG-10** in which one zone can have just paging, and the other zone can have paging plus the 10 different siren, warble, and chime tones that the **MTG-10** can provide.

One or two **PA-60**'s can be added to the Viking model **ZPI-4** four zone paging interface to provide either 60 Watts or 120 Watts of total paging power in four zones. The **PA-60** can also be used to add additional paging power to other Viking paging products such as the **PA-2A**, **PA-15**, and **PA-30**.

The **PA-60**'s inputs are transformer coupled so they are floating and isolated. Because of this they can be connected to any line level audio signal, or by turning down the input gain control to unity gain, can be connected directly to the output of another amplifier. This allows the **PA-60** to be connected directly to an existing paging system speaker wire run to extend the run, with up to 60 more speakers.



# Warranty

## IF YOU HAVE A PROBLEM WITH A VIKING PRODUCT, CONTACT: VIKING TECHNICAL SUPPORT AT 715-386-8666

Our Technical Support Department is available for assistance Monday through Friday 8:00am to 5:00pm central time. So that we can give you better service, before you call please:

1. Know the model number, the serial number and what software version you have (see serial label).
2. Have your Product Manual in front of you.
3. It is best if you are on site.

### RETURNING PRODUCT FOR REPAIR

The following procedure is for equipment that needs repair:

1. Customer must contact Viking's Technical Support Department at 715-386-8666 to obtain a Return Authorization (RA) number. The customer MUST have a complete description of the problem, with all pertinent information regarding the defect, such as options set, conditions, symptoms, methods to duplicate problem, frequency of failure, etc.
2. Packing: Return equipment in original box or in proper packing so that damage will not occur while in transit. Static sensitive equipment such as a circuit board should be in an anti-static bag, sandwiched between foam and individually boxed. All equipment should be wrapped to avoid packing material lodging in or sticking to the equipment. Include ALL parts of the equipment. C.O.D. or freight collect shipments cannot be accepted. Ship cartons prepaid to: **Viking Electronics, 1531 Industrial Street, Hudson, WI 54016**
3. Return shipping address: Be sure to include your return shipping address inside the box. We cannot ship to a PO Box.
4. RA number on carton: In large printing, write the R.A. number on the outside of each carton being returned.

### RETURNING PRODUCT FOR EXCHANGE

The following procedure is for equipment that has failed out-of-box (within 10 days of purchase):

1. Customer must contact Viking's Technical Support at 715-386-8666 to determine possible causes for the problem. The customer MUST be able to step through recommended tests for diagnosis.
2. If the Technical Support Product Specialist determines that the equipment is defective based on the customer's input and troubleshooting, a Return Authorization (R.A.) number will be issued. This number is valid for fourteen (14) calendar days from the date of issue.
3. After obtaining the R.A. number, return the approved equipment to your distributor, referencing the R.A. number. Your distributor will then replace the Viking product using the same R.A. number.
4. **The distributor will NOT exchange this product without first obtaining the R.A. number from you. If you haven't followed the steps listed in 1, 2 and 3, be aware that you will have to pay a restocking charge.**

### TWO YEAR LIMITED WARRANTY

Viking warrants its products to be free from defects in the workmanship or materials, under normal use and service, for a period of two years from the date of purchase from any authorized Viking distributor. If at any time during the warranty period, the product is deemed defective or malfunctions, return the product to Viking Electronics, Inc., 1531 Industrial Street, Hudson, WI., 54016. Customer must contact Viking's Technical Support Department at 715-386-8666 to obtain a Return Authorization (R.A.) number.

This warranty does not cover any damage to the product due to lightning, over voltage, under voltage, accident, misuse, abuse, negligence or any damage caused by use of the product by the purchaser or others. This warranty does not cover non-EWP products that have been exposed to wet or corrosive environments. This warranty does not cover stainless steel surfaces that have not been properly maintained.

**NO OTHER WARRANTIES. VIKING MAKES NO WARRANTIES RELATING TO ITS PRODUCTS OTHER THAN AS DESCRIBED ABOVE AND DISCLAIMS ANY EXPRESS OR IMPLIED WARRANTIES OR MERCHANTABILITY OR FITNESS FOR ANY PARTICULAR PURPOSE.**

**EXCLUSION OF CONSEQUENTIAL DAMAGES. VIKING SHALL NOT, UNDER ANY CIRCUMSTANCES, BE LIABLE TO PURCHASER, OR ANY OTHER PARTY, FOR CONSEQUENTIAL, INCIDENTAL, SPECIAL OR EXEMPLARY DAMAGES ARISING OUT OF OR RELATED TO THE SALE OR USE OF THE PRODUCT SOLD HEREUNDER.**

**EXCLUSIVE REMEDY AND LIMITATION OF LIABILITY. WHETHER IN AN ACTION BASED ON CONTRACT, TORT (INCLUDING NEGLIGENCE OR STRICT LIABILITY) OR ANY OTHER LEGAL THEORY, ANY LIABILITY OF VIKING SHALL BE LIMITED TO REPAIR OR REPLACEMENT OF THE PRODUCT, OR AT VIKING'S OPTION, REFUND OF THE PURCHASE PRICE AS THE EXCLUSIVE REMEDY AND ANY LIABILITY OF VIKING SHALL BE SO LIMITED.**

**IT IS EXPRESSLY UNDERSTOOD AND AGREED THAT EACH AND EVERY PROVISION OF THIS AGREEMENT WHICH PROVIDES FOR DISCLAIMER OF WARRANTIES, EXCLUSION OF CONSEQUENTIAL DAMAGES, AND EXCLUSIVE REMEDY AND LIMITATION OF LIABILITY, ARE SEVERABLE FROM ANY OTHER PROVISION AND EACH PROVISION IS A SEPARABLE AND INDEPENDENT ELEMENT OF RISK ALLOCATION AND IS INTENDED TO BE ENFORCED AS SUCH.**

If trouble is experienced with the **PA-IP** page adapter, for repair or warranty information, please contact:

**Viking Electronics, Inc., 1531 Industrial Street, Hudson, WI 54016 (715) 386-8666**

### WHEN PROGRAMMING EMERGENCY NUMBERS AND (OR) MAKING TEST CALLS TO EMERGENCY NUMBERS:

Remain on the line and briefly explain to the dispatcher the reason for the call. Perform such tests in off-peak hours, such as early morning or late evenings.

### PART 15 LIMITATIONS

This equipment has been tested and found to comply with the limits for a Class A digital device, pursuant to Part 15 of the FCC Rules. These limits are designed to provide reasonable protection against harmful interference when the equipment is operated in a commercial environment. This equipment generates, uses, and can radiate radio frequency energy and, if not installed and used in accordance with the instruction manual, may cause harmful interference to radio communications. Operation of this equipment in a residential area is likely to cause harmful interference in which case the user will be required to correct the interference at his own expense.

**Product Support: 715-386-8666**

Due to the dynamic nature of the product design, the information contained in this document is subject to change without notice. Viking Electronics, and its affiliates and/or subsidiaries assume no responsibility for errors and omissions contained in this information. Revisions of this document or new editions of it may be issued to incorporate such changes.